

ROBIT® DTH PRODUCT CATALOGUE

Let's drill better.

Blast Hole and Well-Drilling Hammers

Reverse Circulation Hammers

DTH Bits



ROBIT® DTH PRODUCT CATALOGUE

6/2025



Robit
FURTHER. FASTER.

Robit

ROBIT® DTH PRODUCT CATALOGUE

Copyright © 2025, Robit Plc

All rights reserved. No part of this catalogue may be reproduced or transmitted in any form or by any means, electronic or mechanical, including photocopying, recording, or by any information storage and retrieval system, without written permission from the publisher.

Trademarks

Robit is a trademark of Robit Plc

Publisher

Robit Plc

www.robittgroup.com



Printed: June 2025

Robit reserves all rights to any changes in the products and the specifications without prior notice.



CONTENTS.....	3	DTH BITS	41
ROBIT IN BRIEF	4	BIT SELECTION GUIDE	42
PRODUCT LINES.....	6	CONVENTIONAL BITS.....	44
DTH APPLICATIONS	7	BR2	45
ROBIT DOWN THE HOLE OFFERING	8	IR/DHD3.5	45
DTH HAMMERS FOR MINING & QUARRYING		TD40	45
AND WELL-DRILLING	11	DHD340.....	46
H SERIES HAMMER CODES	12	QL50.....	46
RC HAMMER CODES.....	14	DHD350.....	46
BLAST HOLE & WELL-DRILLING HAMMERS	19	QL60.....	47
BR2	20	DHD360.....	47
Dominator 30 Powered by Halco	21	QL80.....	47
H4	22	DHD380.....	47
H5	23	RC BITS	48
H6	24	DR44	49
H8	25	DR53	49
RC HAMMERS.....	27	DR55	49
DR44	28-30	DR55 RETENTION.....	49
DR53	31-34		
DR55	35-38		



ROBIT IN BRIEF

The Experts in Drilling Tools

Robit is a global expert focusing on high-quality drilling tools for mining and construction markets to help you drill further and faster. Robit strives to be world number one company in drilling tools.

Through our high and proven quality Top Hammer, Down the Hole and Geotechnical products, combined with our expert services, we deliver concrete savings in drilling costs to our customers.

Robit has its own sales and service points in six countries and an active distributor network with a global footprint selling to more than 100 countries. Robit's manufacturing units are located in Finland, South Korea, and the United Kingdom.

For more information, visit www.robitchgroup.com





Down the Hole

The Down the Hole business line covers all operations related to the down the hole drilling method. The main product categories consist of DTH hammers, DTH bits and DTH tubes. The selection is competitive and encompasses top quality products for all your drill & blast as well as well-drilling applications.

Geotechnical

Robit's Geotechnical business line focuses on geotechnical applications, particularly anchoring, micropiling and underpinning, piling, and well drilling. Geotechnical applications are most commonly related to drilling done before or as a part of a construction process. Our selection contains a wide variety of specialized hammers, drill bits and ring bits, as well as advanced casing systems for all your needs.

Top Hammer

Robit Top Hammer business line covers all applications in construction, quarrying and mining, blasting, and forepoling, from the softest to the hardest of rock conditions. Underground construction is one of the most important customer segments for Robit bits, and applications such as drifting and bolt hole drilling are well catered for, as well as patented RoX top hammer casing systems for tunnelling support. The selection is wide and encompasses products such as drifting and tunneling bits, reaming equipment, bench and production drilling bits, rods, shanks, couplings, and auxiliary tools, such as button bit adapters.

We offer you:

- The highest quality in drilling consumables – our focus is 110 % in drilling consumables
- Excellent drilling results and performance – we have a lot of references
- We emphasize short lead time and precise deliveries from our 3 factories, supported by comprehensive local availability on every continent.

Robit is continuously modelling and simulating the dynamic forces and stresses of drilling, and innovates new solutions to meet the best performance, efficiency, and lifetime to fulfill drillers' needs.



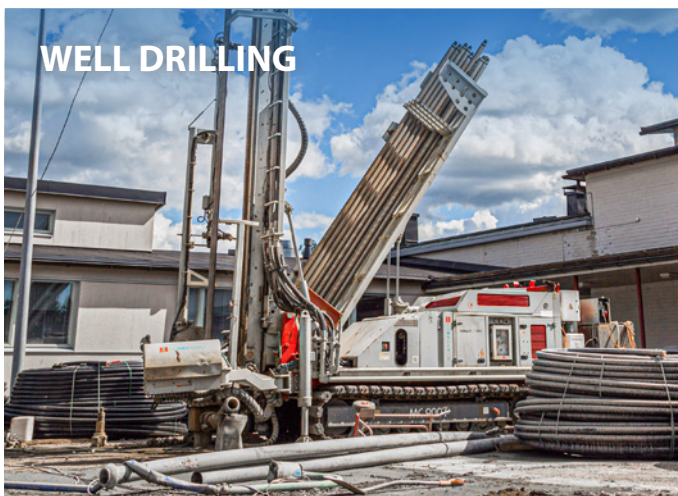
MINING & QUARRYING

- Blast hole hammers and bits
- Reverse circulation hammers and bits
- Drill pipes
- Accessories



CONSTRUCTION

- General purpose hammers and bits
- Casing advancing systems
- Shock absorbers
- Drill pipes
- Accessories



WELL DRILLING

- Well drilling hammers and bits
- Casing advancing systems
- Shock absorbers
- Drill pipes
- Accessories



Competitive offering in Down the Hole drilling consumables



Unbeatable DTH Hammers – Wide range of all sizes of blast hole, general purpose, well-drilling, and reverse circulation hammers. The hammers have robust design as well as minimized fuel consumption and optimized air flow with the highest performance.



Efficient DTH Bits – For drilling blast holes, wells; for general purposes as well as RC models for sampling. Robust designs for achieving maximum penetration rate in hard and abrasive rock conditions.



Robust Casing Advancing Systems – Sizes from 114.3 mm up to 1524 mm. Wide range of ring bit, wing bit, eccentric and drill through models. Proven quality worldwide – references in all applications.



Reliable Shock Absorbers – Efficient dampening available for hammers from 2" up to 33".



Strong Drill Pipes – Single pipes available from OD 76 mm up to 323 mm sizes and double pipes from OD 406 mm up to 1220 mm. Tool joints API reg. and HEX standards.



Wide range of Accessories – Wide range of subs, check valves, hammer sleeves, air hoses, and chain keys. Ask for more: sales@robitgroup.com

Proven quality – manufactured with automated production lines

- Lower fuel consumption
- Best in class performance
- Unbeatable in all conditions
- Drill FURTHER and FASTER with these high penetration rate drilling tools



Reliable partner

Competitive offering in drilling consumables – Proven quality – Customization for project needs – Drill master service – Solving drilling challenges and problems – Decades of experience – Numerous references



Robit 45

Further. Faster.

Further. Faster.

DR045

LEOPARD



Robit[®] H4

Further. Faster. Further. Faster.

DTH HAMMERS FOR MINING & QUARRYING AND WELL-DRILLING

Blast hole & well-drilling hammers

Exploration & grade control (RC) hammers

BR2 & Dominator 30 for blasthole drilling

- Proven small-diameter design
- Legacy engineering and design

H series for blasthole and well-drilling

- Lower fuel consumption
- Best in class performance
- Guaranteed operational savings
- Unbeatable in all conditions



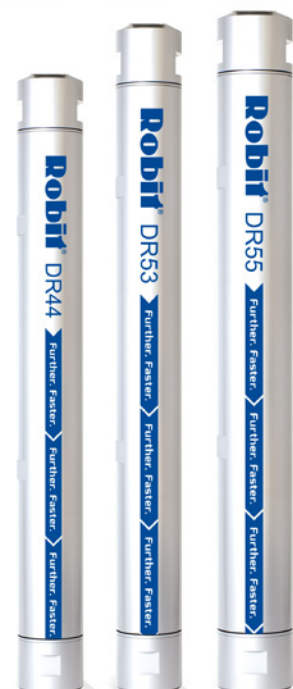
Please contact Robit's sales regarding the



DTH hammers: sales@robitgroup.com

DR series for RC drilling

- Proven choice for exploration & grade control markets
- Offered in common diameters
- Designed for use with high output compressors

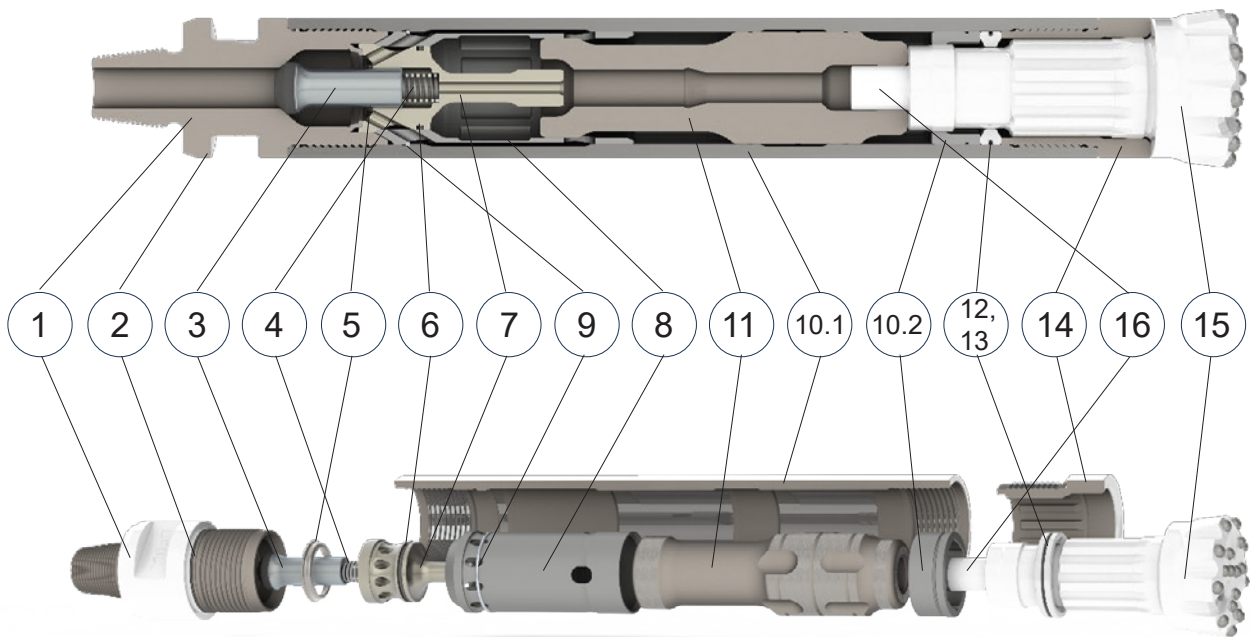


Components

The modular Robit H Series hammer family is available in 4", 5", 6" and 8" size ranges. Version alternatives are:

- Standard offering Heavy Duty (HD) and Slim Line (SL) with reduced OD
- Standard offering Foot Valved (FV) and Tubeless (TL) using bits without foot valves
- Maximum Performace (MX) with high output inner cylinder and High Efficiency (HF) with reduced air consumption maximizing fuel efficiency

Shank and thread connections are size specific.



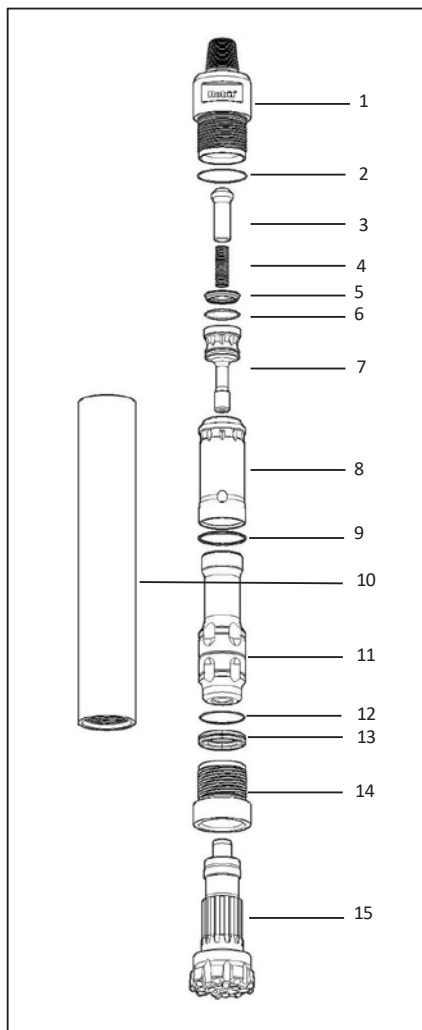
1	Backhead (Top adapter)	5	Make up ring	9	Snap ring	13	Bit retaining ring
2	Backhead (Top adapter) O-ring	6	Air distributor O-ring	10.1	Wear sleeve	14	Drive chuck
				10.2	Guide bush		
3	Check valve	7	Air distributor	11	Piston	15	DTH bit
4	Check valve spring	8	Inner cylinder	12	Bit retaining ring O-ring	16	Foot valve

Hammer Kits

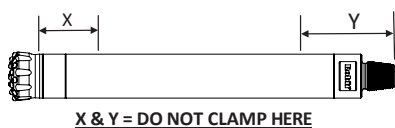
The following H series kits are available:

- **Service kit**, includes components: 2, 4, 6 and 12
- **Repair kit**, includes components: 2, 3, 4, 5, 6, 12, 13 and 14
- **Life kit**, includes components: 1, 10.1, 10.2 and 14

Dismantling the hammer



A, When dismantling hammers it is essential that the wear sleeve is clamped in the correct position.

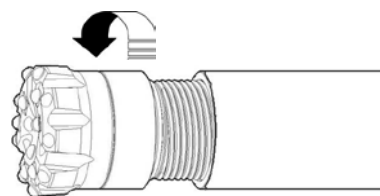


DIMENSION	X		Y	
	mm	Inches	mm	Inches
H4	140	5.5	240	9.8
H5	160	6.3	270	11.0
H6	160	6.3	310	12.7
H8	210	8.3	345	14.1

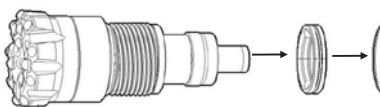
B, Break the top joint between Back-head (1) and Wear Sleeve (10) and bottom joint between Chuck (14) and Wear Sleeve (10).



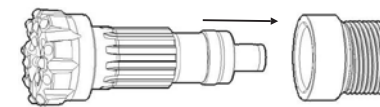
C, Unscrew and remove Drill Bit (15), Drive Sub (14) and Bit Retaining Rings (13) from Cylinder (10).



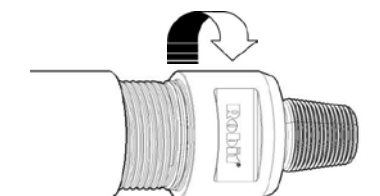
D, Remove Bit Retaining Ring (13) from Drill bit (15). Remove 'O' Ring (12) from Bit Retaining Ring (13).



E, Remove Chuck (14) from Drill Bit (15).



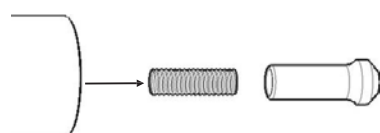
F, Unscrew and remove Back Head (1) from Wear Sleeve (10).



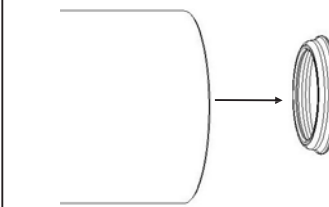
G, Remove 'O' Ring (2) from Back Head (1).



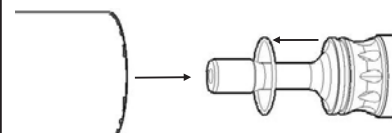
H, Remove Check Valve (3) and Chuck Valve Spring (4) from Wear Sleeve (10).



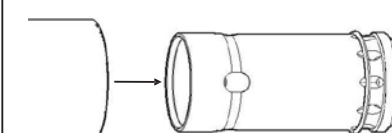
I, Remove Make Up Ring (5) from Wear Sleeve (10).



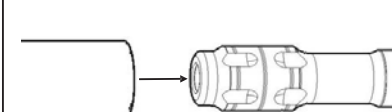
J, Remove Air Distributor (7) from Wear Sleeve (10). Remove 'O' Ring (6) from Air Distributor (7).



K, Remove Inner Cylinder (8) from Wear Sleeve (10).



L, Remove Piston (11) from Wear Sleeve (10).

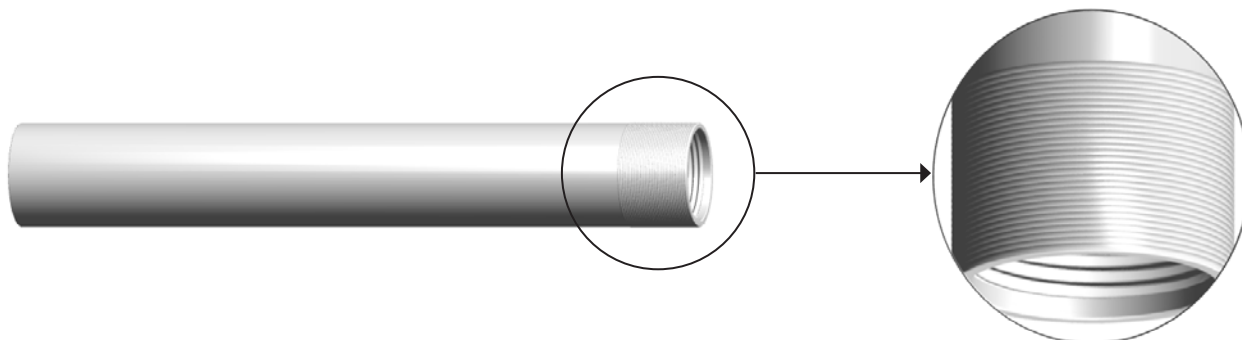


HAMMER RE-ASSEMBLY IS REVERSAL OF DISASSEMBLY.

RC HAMMERS CODES

Wear Sleeve

All Robit RC hammers have a coating on the bottom of the Wear Sleeve. This protects the Wear Sleeve from premature wear created by the turbulence of the outside return cuttings.

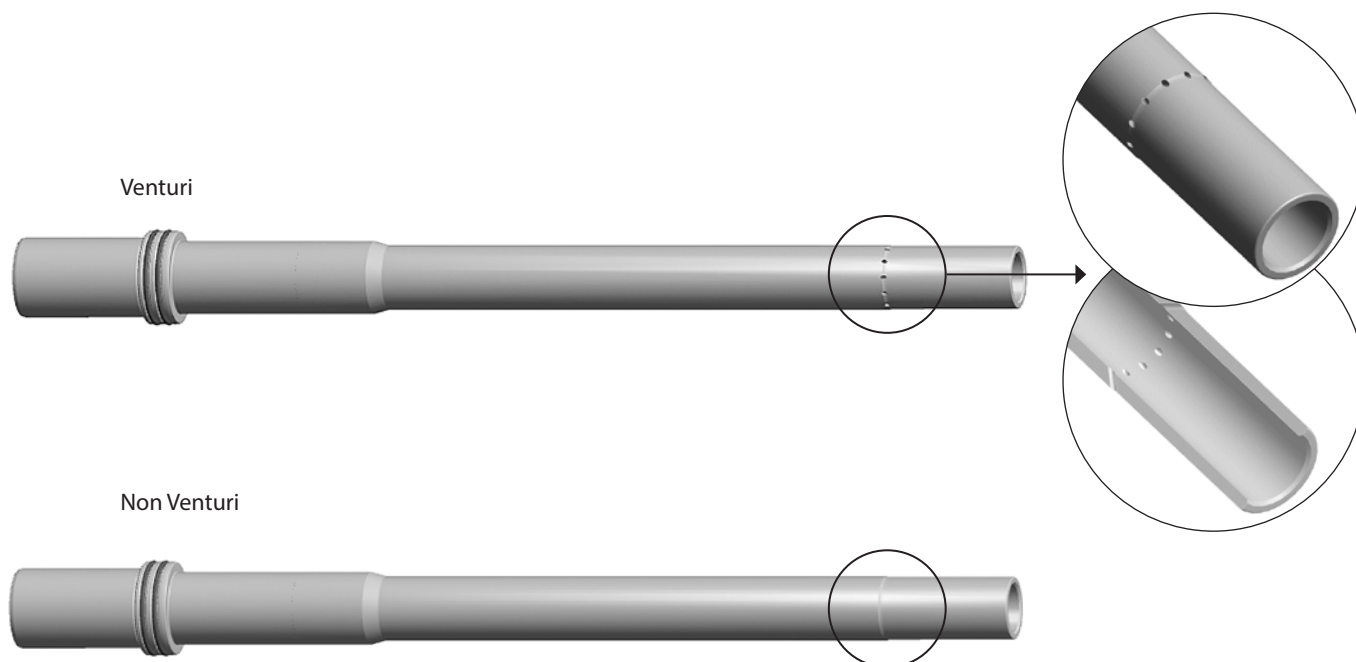


Sample Tube

With the Sample Tube there are two options, Venturi and Non-Venturi.

The Venturi Sample Tubes have small holes drilled near the bottom end. This allows a small amount of air to bleed off into the tube to help lift the returning sample. Non-Venturi Sample

The Tubes are straight tubes with no additional drilled holes.

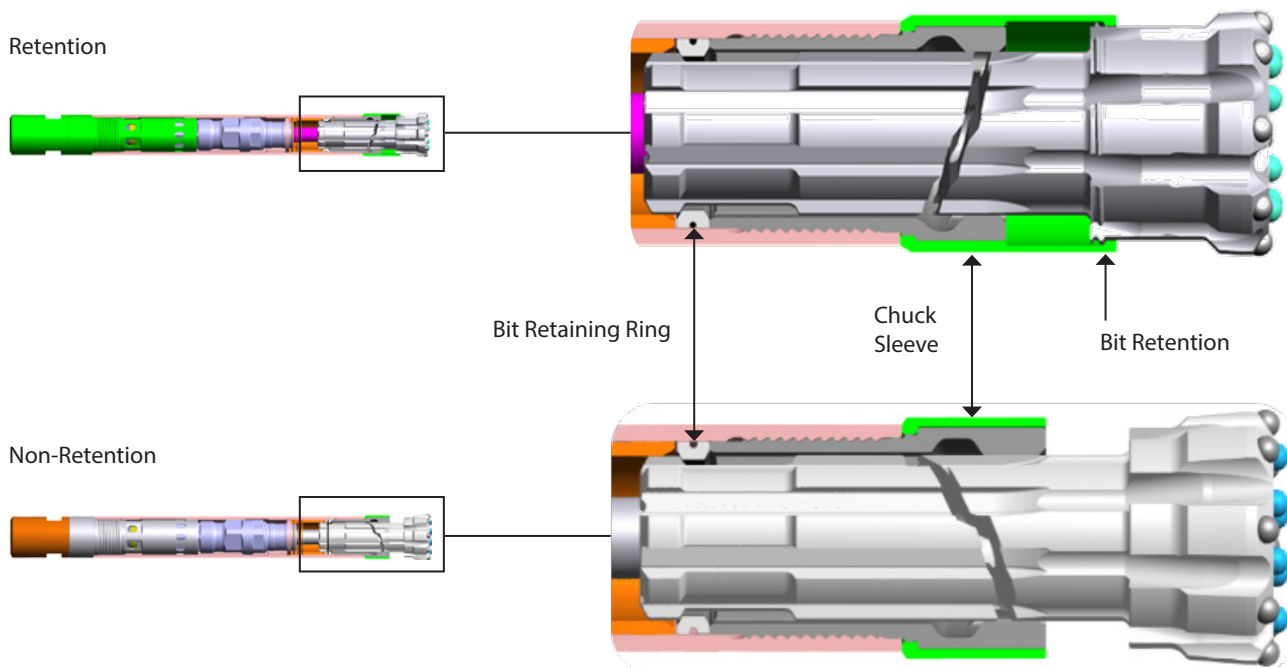
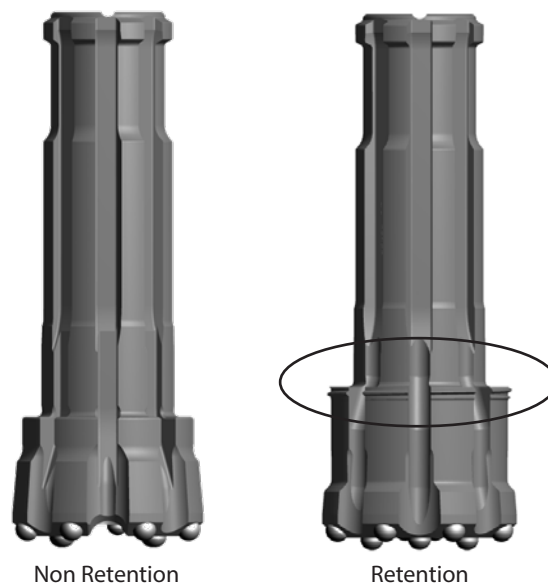


Bit Retention

The Bit Retention system can be described as a bit recovery system.

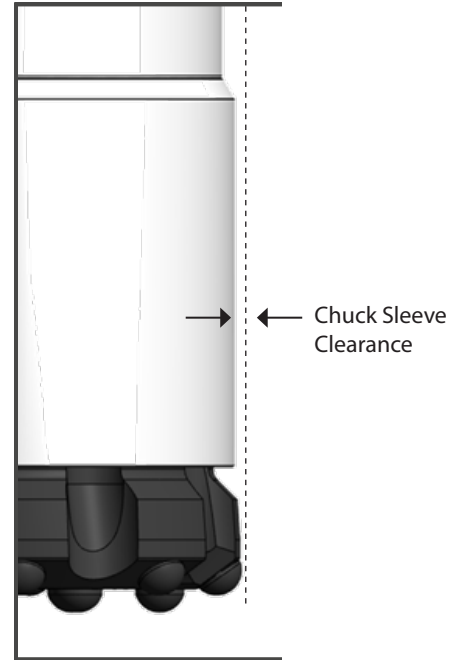
If the drill bit were to break, the Chuck Sleeve will retain the bit head so it will not be lost down the hole. This enables the driller to pull the drill string out of the ground, replace the broken bit and continue drilling the hole.

Different components between Retention and Non-Retention hammers are the Chuck, Chuck Sleeve and Bit. The rest of the hammer assembly remains the same.



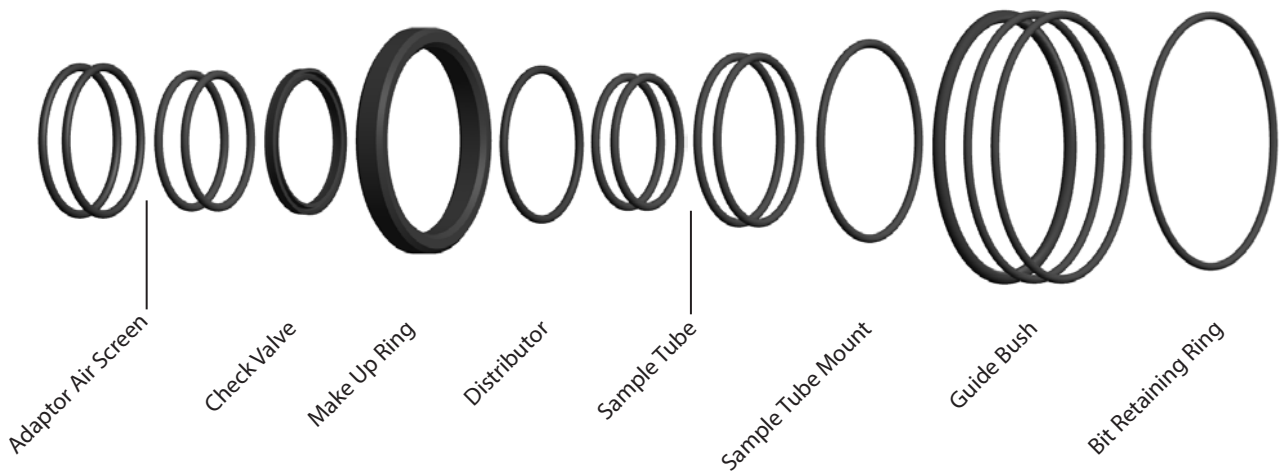
Chuck Sleeve

Chuck Sleeves are used to direct the air to the face of the bit to carry the rock sample to be collected. This is done by almost sealing off the hole behind the drill bit, forcing the air and cuttings up the Sample Tube. Recommended Chuck Sleeve size is 1/16" (1.6mm) smaller than the bit size.



O Ring / Service Kits

It is recommended that all rubber components are replaced at regular intervals to keep the hammer operating at its optimum. Service Kits have all rubber components in a hammer while the O Ring Kit does not include Check Valve Seal and Make Up Ring.





Robit H6

Further. Faster.

Further. Faster.

DTH HAMMERS

BLAST HOLE AND WELL-DRILLING HAMMERS

Hammer	Shank	Top sub thread options	Wear Sleeve O.D.		Length		Weight	Piston weight
			[mm]	[in]	[mm]	[in]	[kg]	[kg]
BR2	BR2	RD50	62	2.441	838	32.992	13.0	1.8
DOM30	DHD3.5	2 ¾ API REG	81	3.189	832	32.756	23.0	5.0
H4 HD	TD40 DHD340	3 ¾ API REG	102	4.016	860	33.858	38.0	8.4 (FV) 8.1 (TL)
H4 SL	TD40 DHD340	3 ¾ API REG	98	3.858	860	33.858	34.0	8.4 (FV) 8.1 (TL)
H5 HD	QL50 DHD350	3 ½ API REG	126	4.961	915	36.024	61.5	13.9 (FV) 11.8 (TL)
H5 SL	QL50 DHD350	3 ½ API REG	120	4.724	915	36.024	54.0	13.9 (FV) 11.8 (TL)
H6 HD	QL60 DHD360	3 ½ API REG	146	5.748	1014	39.921	74.5	20.5 (FV) 17.5 (TL)
H6 SL	QL60 DHD360	3 ½ API REG	140	5.512	1014	39.921	65.0	20.5 (FV) 17.5 (TL)
H8 HD	QL80 DHD380	4 ½ API REG	194	7.638	1245	49.016	200.0	46.8 (FV) 41.6 (TL)
H8 SL	QL80 DHD380	4 ½ API REG	184	7.244	1245	49.016	172.0	46.8 (FV) 41.6 (TL)



Please contact Robit's sales regarding the **Robit** **MARATHON** DTH hammers: sales@robitgroup.com

BLAST HOLE HAMMERS

BR2

Hammer 70 mm - 80 mm dia. Holes

The Robit BR2 is a valved type hammer designed for high performance at low operating air pressures. Simplicity of design, ease of service and low air consumption are all factors which combine to make this hammer a robust and reliable drilling tool. The BR2 is available with standard box and pin backheads, RD50 and BR2 threads. However alternative backhead options are available on request. The BR2 hammer incorporates a positive fitting check valve to guard against the ingress of ground water debris.

Component parts

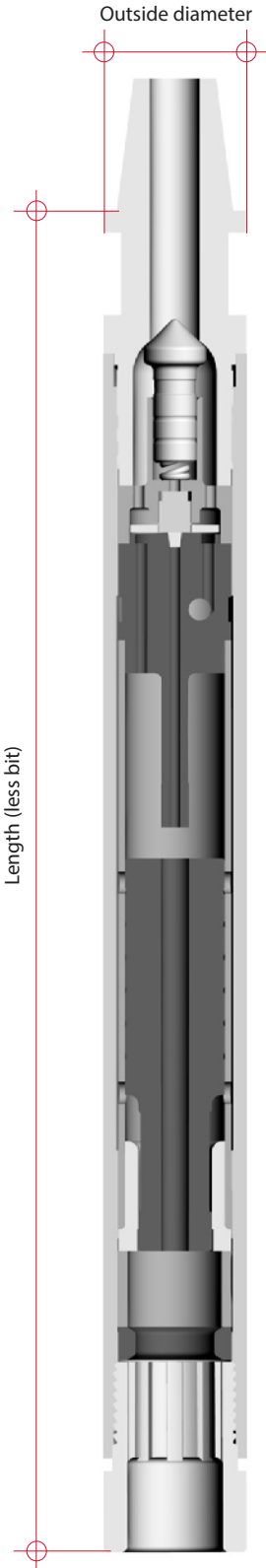
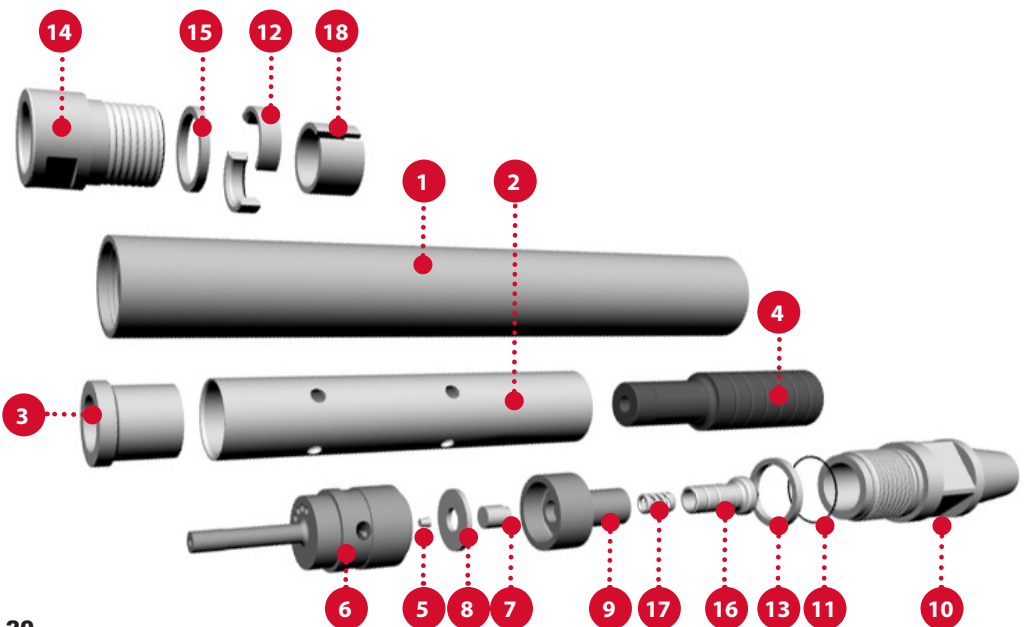
Ref	Description	Part number
1	Wearsleeve	HSB2S00
2	Inner Cylinder	HSB2S01
3	Bearing	HSB2S02
4	Piston	HSB2S03
5	Air Metering Plug	IPP04
6	Bevelled Valve Housing	HSB2S04
7	Centraliser	HSB2S05
8	Disc Valve	HSB2S06
9	Valve Chest	HSB2S07
10	Backhead	HSB2S3811F
11	Backhead 'O'Ring	HSB2S14
12	Bit Retaining Ring	HSB2S37ST
13	Backhead Spacer	HSB2S12
14	Chuck	HSB2S35ST
15	Chuck Sealing Ring	HSB2S13
16	Check Valve	IPRCV01
17	Check Valve Spring	IPRCVS01
18	Split Spacer	HSB2S36ST
	Complete Hammer	BR2S01

Air consumption (Pressure at Compressor)

PSI	BAR	m ³ /min	ft ³ /min
100	6.9	0.75	26.65
150	10.3	1.39	48.96
200	13.8	2.13	75.38
250	17.2	2.98	105.35

Hammer specification

	Imperial	Metric
Weight (less bit)	28.6 lbs	13 kg
Length (less bit)	33"	838 mm
Outside dia.	2.44"	64 mm
Piston weight	4 lbs	1.8 kg



BLAST HOLE HAMMERS

DOMINATOR 30 POWERED BY HALCO ROCK TOOLS

Hammer 90 mm (3 1/2") - 105 mm (4 1/8") diameter holes

The Robit® Dominator 30 Powered by Halco Rock Tools hammer is a high performance hammer for medium to hard rock conditions. This hammer has no internal liner which allows a larger piston diameter for greater blow energy.

- Optimum performance at air pressures ranging from 7 to 25 bar (100-362 psi)
- Standard 2 3/8" API reg. pin backhead
- DHD3.5 bit shank fitting

Component parts

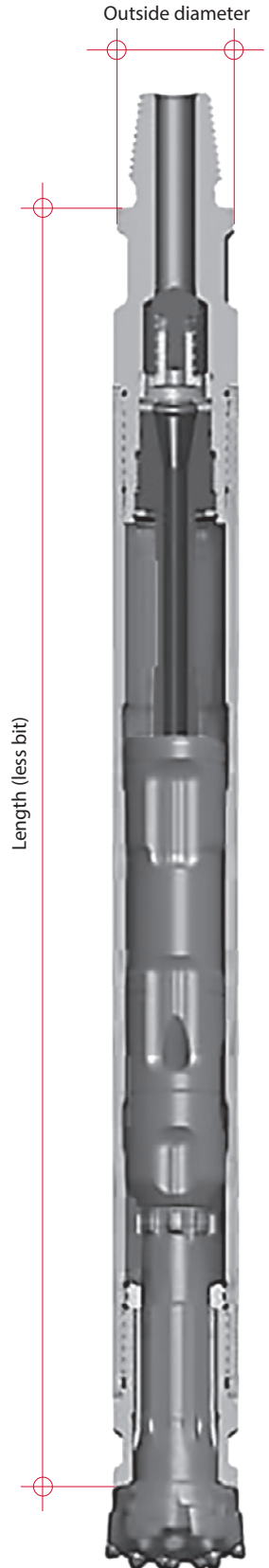
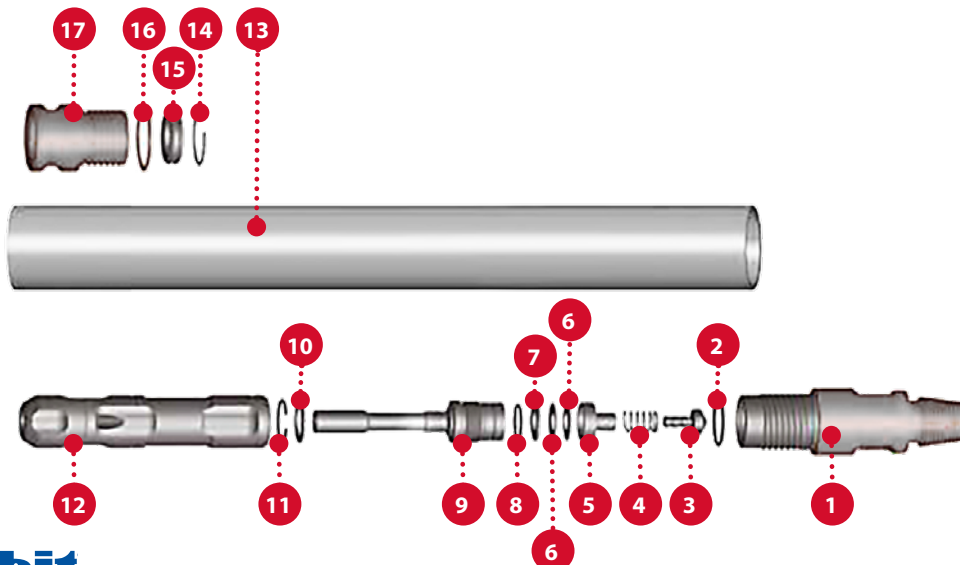
Ref	Description	Part number
1	Top Adaptor	602980
2	O-Ring	768098
3	Non Return Valve	602328
4	N.R.V. Spring	760100
5	N.R.V. Housing	602971
6	Disk Springs	760094
7	Thrust Washer	602972
8	O-Ring	768033
9	Air Distributor	603108
10	Washer	602979
11	Snap Ring	783035
12	Piston	603107
13	Cylinder	602974
14	Spacer	783036
15	Bit Retaining Ring	602976
16	Chuck Spacer	602977
17	Chuck	602978
	Complete Hammer	600424

Air consumption (Pressure at Compressor)

PSI	BAR	m ³ /min	ft ³ /min
100	6.9	2.55	90.00
150	10.3	4.53	160.00
200	13.8	6.51	230.00
250	17.2	8.50	300.00
300	20.7	10.76	380.00
350	24.2	12.74	450.00

Hammer specification

	Imperial	Metric
Weight (less bit)	83.8 lbs	23 kg
Length (less bit)	32.25"	832 mm
Outside dia.	3.35"	81 mm
Piston weight	11.02 lbs	5.0 kg



BLAST HOLE AND WELL-DRILLING HAMMERS

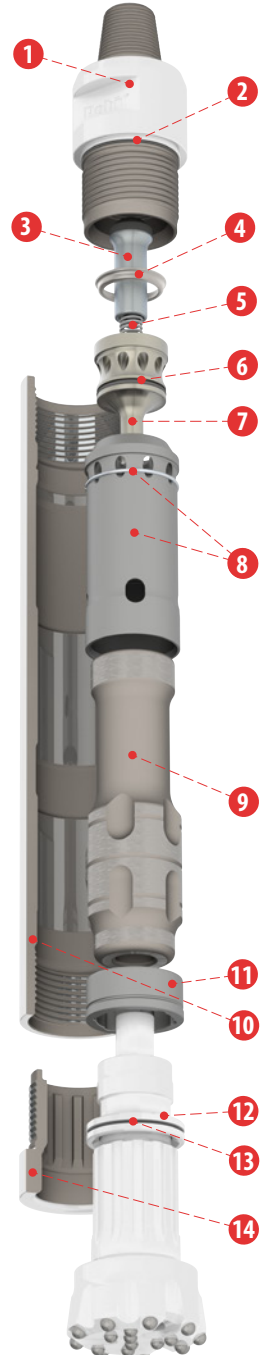


■ = Drill & blast
■ = Well-drilling

DTH hammer for 108 mm / 4 1/4" (SL) - 140 mm (5 1/2") diameter holes (TD40 or DHD340 fitting)

Complete Hammer

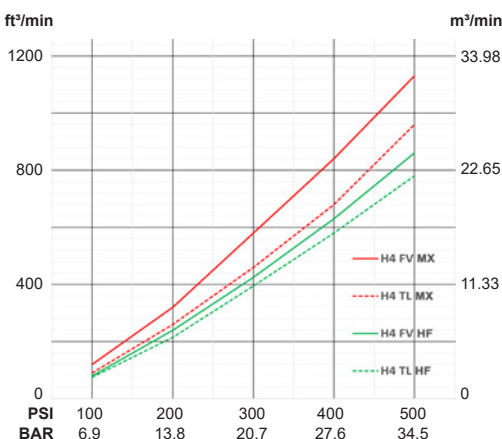
Model	Configuration	Part Number	Description	Drill & Blast	Well-Drilling
TD40	HD	FV MX 2002352	H4 TD40 HD FV MX API 2 3/8IN Reg Pin	■	■
		HF 2002813	H4 TD40 HD FV HF API 2 3/8IN Reg Pin	■	■
	SL	FV MX 2002967	H4 TD40 SL FV MX API 2 3/8IN Reg Pin	■	■
		HF 2002972	H4 TD40 SL FV HF API 2 3/8IN Reg Pin	■	■
DHD340	HD	FV MX 2002706	H4 DHD340 HD FV MX API 2 3/8IN Reg Pin	■	■
		HF 2003354	H4 DHD340 HD FV HF API 2 3/8IN Reg Pin	■	■
	SL	FV MX 2002981	H4 DHD340 SL FV MX API 2 3/8IN Reg Pin	■	■
		HF 2003342	H4 DHD340 SL FV HF API 2 3/8IN Reg Pin	■	■



Components

Ref	Description	Part number TD40	Part number DHD340
1	Top adaptor/Backhead HD (SL)	2002340 (2002968)	
2	Backhead O-ring	06M-00-0542	
3	Check valve	2002351	
4	Make up ring	2002341	
5	Check valve spring	06J-25-0544	
6	Air distributor O-ring	06M-00-0541	
7	Air distributor	2002342	
8a	Inner cylinder assembly - MX (Maximum Performance)	2002854	
8b	Inner cylinder assembly - HF (High Efficiency)	2002853	
9	Piston FV, Foot valved (TL, Tubeless)	2002345 (2002346)	2002702
10	Wear sleeve HD (SL)	2002347 (2002969)	
11	Guide bush FV (TL)	2002348 (2002349)	2002698
12	Bit retaining ring assembly (incl. 13, O-ring)	2002350	2002700
13	Bit retaining ring O-ring	06M-00-0543	
14	Chuck HD (SL)	2002518 (2002970)	2002701 (2002978)
	Service kit H4 incl. (2, 5, 6, 13)	2002861	
	Repair kit H4 HD (SL) incl. (2, 3, 4, 5, 6, 12, 14)	2002862 (2003508)	2003355 (2003343)
	Life Kit H4 HD (SL) FV API 2 3/8" Pin incl. (1, 10, 11, 14)	2002825 (2003318)	2003356 (2003344)
	Life Kit H4 HD (SL) TL API 2 3/8" Pin incl. (1, 10, 11, 14)	2002826 (2003509)	-

Air Consumption



Hammer Specifications

	Imperial	Metric
Weight (HD, less bit)	83.8 lbs	38.0 kg
Weight (SL, less bit)	75.0 lbs	34.0 kg
Length (less bit)	33.86"	860 mm
Outside Dia. (HD)	4.02"	102 mm
Outside Dia. (SL)	3.86"	98 mm
Discard Limit	3.54"	90 mm
Piston Weight (FV)	18.5 lbs	8.4 kg
Piston Weight (TL)	17.9 lbs	8.1 kg

HD = Heavy Duty
 SL = Slim Line
 FV = Foot Valved
 TL = Tubeless
 MX = Maximum Performance
 HF = High Efficiency

Please contact Robit's sales regarding the



DTH hammers: sales@robitgroup.com



BLAST HOLE AND WELL-DRILLING HAMMERS

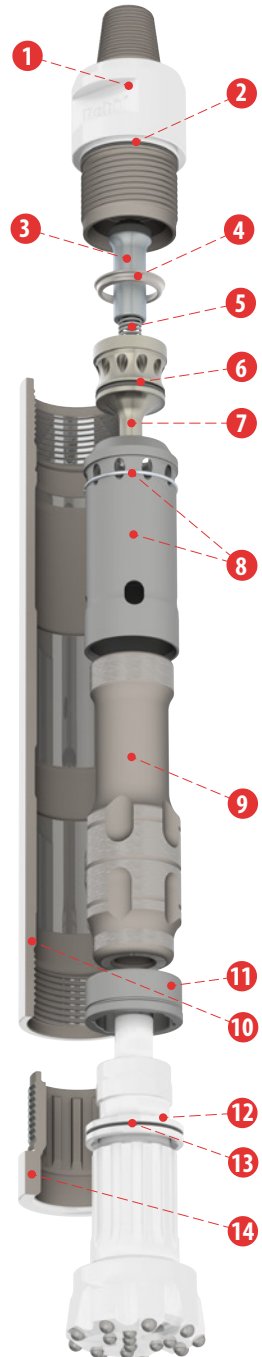


■ = Drill & blast
■ = Well-drilling

DTH hammer for 127 mm / 5" (SL) - 165 mm (6 1/2") diameter holes (QL50 or DHD350 fitting)
 140 mm / 5 1/2" (HD)

Complete Hammer

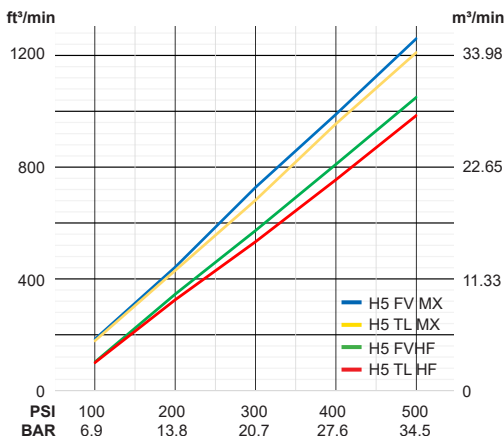
Series	Configuration	Bit Type	Part Number	Description	Drill & Blast	Well-Drilling
QL50	HD	FV	1281126	H5 QL50 HD FV MX API 3 1/2IN Reg Pin	■	■
		HF	1281128	H5 QL50 HD FV HF API 3 1/2IN Reg Pin	■	■
	SL	FV	1281125	H5 QL50 HD TL MX API 3 1/2IN Reg Pin	■	■
		HF	1281127	H5 QL50 HD TL HF API 3 1/2IN Reg Pin	■	■
	SL	FV	1281305	H5 QL50 SL FV MX API 3 1/2IN Reg Pin	■	■
		HF	1281307	H5 QL50 SL FV HF API 3 1/2IN Reg Pin	■	■
DHD350	HD	FV	1281304	H5 QL50 SL TL MX API 3 1/2IN Reg Pin	■	■
		HF	1281306	H5 QL50 SL TL HF API 3 1/2IN Reg Pin	■	■
	HD	FV	1281241	H5 DHD350 HD FV MX API 3 1/2IN Reg Pin	■	■
		HF	1281243	H5 DHD350 HD FV HF API 3 1/2IN Reg Pin	■	■
	SL	FV	1281379	H5 DHD350 SL FV MX API 3 1/2IN Reg Pin	■	■
		HF	1281375	H5 DHD350 SL FV HF API 3 1/2IN Reg Pin	■	■



Components

Ref	Description	Part number QL50	Part number DHD350
1	Top adaptor/Backhead HD (SL)	1281142 (1281300)	
2	Backhead O-ring	9003608	
3	Check valve	9003556	
4	Make up ring	1281144	
5	Check valve spring	9003555	
6	Air distributor O-ring	9003609	
7	Air distributor	1281143	
8a	Inner cylinder assembly - MX (Maximum Performance)	1281131	
8b	Inner cylinder assembly - HF (High Efficiency)	1281132	
9	Piston FV, Foot valved (TL, Tubeless)	1281139 (1281138)	1281247
10	Wear sleeve HD (SL)	1281133 (1281309)	
11	Guide bush FV (TL)	1281135 (1281134)	1281249
12	Bit retaining ring assembly (incl. 13, O-ring)	1281141	1281251
13	Bit retaining ring O-ring	1098824	
14	Chuck HD (SL)	1281140 (1281301)	1281250 (1281376)
	Service kit H5 incl. (2, 5, 6, 13)	1281281	
	Repair kit H5 HD (SL) incl. (2, 3, 4, 5, 6, 12, 14)	1281282 (1281344)	1281382 (1281381)
	Life Kit H5 HD (SL) FV API 3 1/2" Pin incl. (1, 10, 11, 14)	1281334 (1281345)	1281384 (1281383)
	Life Kit H5 HD (SL) TL API 3 1/2" Pin incl. (1, 10, 11, 14)	1281283 (1281380)	-

Air Consumption



Hammer Specifications

	Imperial	Metric
Weight (HD, less bit)	179.7 lbs	61.5 kg
Weight (SL, less bit)	119.0 lbs	54.0 kg
Length (less bit)	36.02"	915 mm
Outside Dia. (HD)	4.96"	126 mm
Outside Dia. (SL)	4.72"	120 mm
Discard Limit	4.49"	114 mm
Piston Weight (FV)	30.6 lbs	13.9 kg
Piston Weight (TL)	26.0 lbs	11.8 kg

HD = Heavy Duty
 SL = Slim Line
 FV = Foot Valved
 TL = Tubeless
 MX = Maximum Performance
 HF = High Efficiency

Please contact Robit's sales regarding the



DTH hammers: sales@robitgroup.com

BLAST HOLE AND WELL-DRILLING HAMMERS

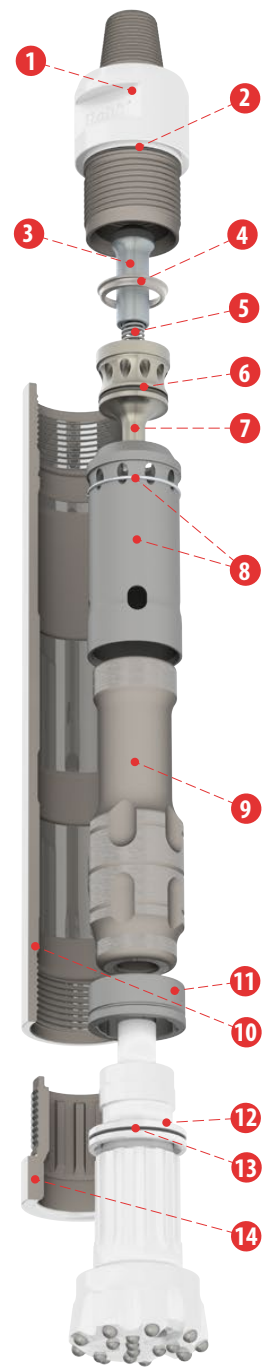


■ = Drill & blast
■ = Well-drilling

DTH hammer for 152 mm / 6" (SL) - 216 mm / 8 1/2" diameter holes (QL60 or DHD360 fitting)
 158 mm / 6 1/4" (HD)

Complete Hammer

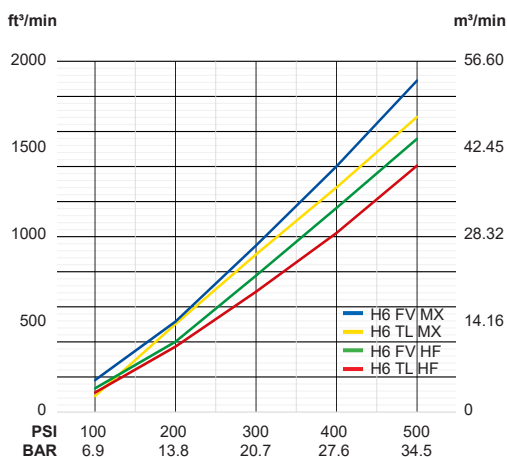
Model	Configuration	Bit Type	Part Number	Description	Drill & Blast	Well-Drilling
QL60	HD	FV	MX 1281089	H6 QL60 HD FV MX API 3 1/2IN Reg Pin	■	■
		HF	1281091	H6 QL60 HD FV HF API 3 1/2IN Reg Pin	■	■
	TL	MX	1281088	H6 QL60 HD TL MX API 3 1/2IN Reg Pin	■	■
		HF	1281090	H6 QL60 HD TL HF API 3 1/2IN Reg Pin	■	■
	SL	FV	MX 1281297	H6 QL60 SL FV MX API 3 1/2IN Reg Pin	■	■
		HF	1281299	H6 QL60 SL FV HF API 3 1/2IN Reg Pin	■	■
DHD360	HD	FV	MX 1281296	H6 QL60 SL TL MX API 3 1/2IN Reg Pin	■	■
		HF	1281298	H6 QL60 SL TL HF API 3 1/2IN Reg Pin	■	■
	SL	FV	MX 1281392	H6 DHD360 HD FV MX API 3 1/2IN Reg Pin	■	■
		HF	1281394	H6 DHD360 HD FV HF API 3 1/2IN Reg Pin	■	■
	SL	FV	MX 1281391	H6 DHD360 SL FV MX API 3 1/2IN Reg Pin	■	■
		HF	1281393	H6 DHD360 SL FV HF API 3 1/2IN Reg Pin	■	■



Components

Ref	Description	Part number QL60	Part number DHD360
1	Top adaptor/Backhead HD (SL)	1281077 (1281292)	
2	Backhead O-ring	1098881	
3	Check valve	9003390	
4	Make up ring	1281080	
5	Check valve spring	9003388	
6	Air distributor O-ring	1242029	
7	Air distributor	1281068	
8a	Inner cylinder assembly - MX (Maximum Performance)	1281114	
8b	Inner cylinder assembly - HF (High Efficiency)	1281115	
9	Piston FV, Foot valved (TL, Tubeless)	1281078 (1281074)	1281402
10	Wear sleeve HD (SL)	1281069 (1281308)	
11	Guide bush FV (TL)	1281079 (1281074)	1281403
12	Bit retaining ring assembly (incl. 13, O-ring)	1281073	1281401
13	Bit retaining ring O-ring	1098846	-
14	Chuck HD (SL)	1281072 (1281293)	1281400 (1281399)
	Service kit H6 incl. (2, 5, 6, 13)	1281284	
	Repair kit H6 HD (SL) incl. (2, 3, 4, 5, 6, 12, 14)	1281285 (1281342)	1281396 (1281395)
	Life Kit H6 HD (SL) FV API 3 1/2" Pin incl. (1, 10, 11, 14)	1281335 (1281343)	1281398 (1281397)
	Life Kit H6 HD (SL) TL API 3 1/2" Pin incl. (1, 10, 11, 14)	1281286 (1281407)	-

Air Consumption



Hammer Specifications

	Imperial	Metric
Weight (HD, less bit)	164.2 lbs	74.5 kg
Weight (SL, less bit)	143.3lbs	65.0 kg
Length (less bit)	39.92"	1014 mm
Outside Dia. (HD)	5.75"	146 mm
Outside Dia. (SL)	5.51"	140 mm
Discard Limit	5.12"	130 mm
Piston Weight (FV)	45.2 lbs	20.5 kg
Piston Weight (TL)	38.6lbs	17.5kg

HD = Heavy Duty
 SL = Slim Line
 FV = Foot Valved
 TL = Tubeless
 MX = Maximum Performance
 HF = High Efficiency

Please contact Robit's sales regarding the



DTH hammers: sales@robitgroup.com



BLAST HOLE AND WELL-DRILLING HAMMERS

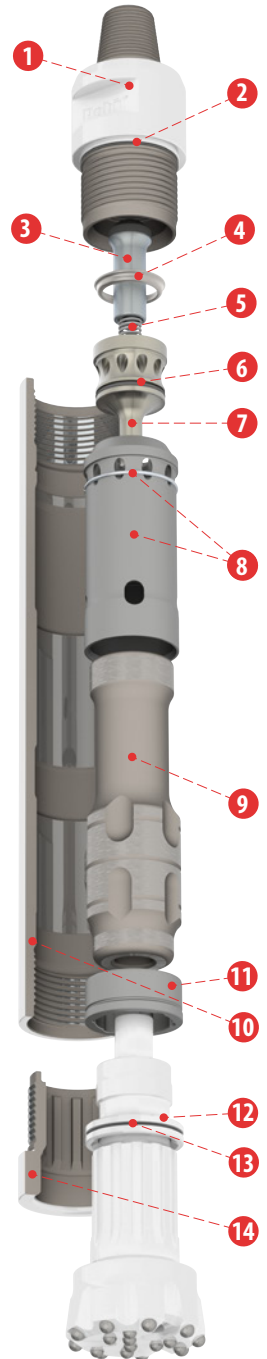


■ = Drill & blast
■ = Well-drilling

DTH hammer for 203 mm / 8" (SL) - 254 mm (10") diameter holes (QL80 or DHD380 fitting)
 216 mm / 8 1/2" (HD)

Complete Hammer

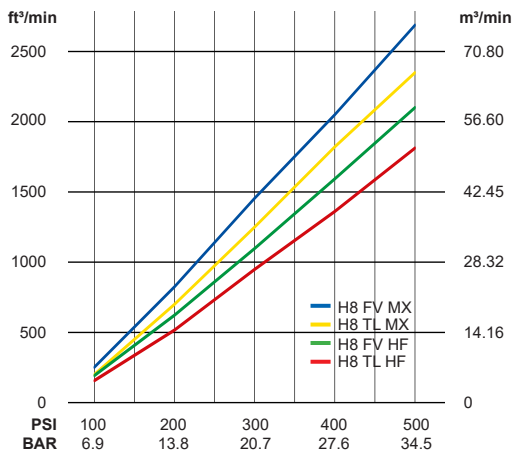
Model	Configuration	Pin Type	Part Number	Description	Drill & Blast	Well-Drilling
QL80	HD	FV	MX 1281094	H8 QL80 HD FV MX API 4 1/2IN Reg Pin	■	■
		HF	1281096	H8 QL80 HD FV HF API 4 1/2IN Reg Pin	■	■
	SL	FV	MX 2002987	H8 QL80 SL FV MX API 4 1/2IN Reg Pin	■	■
		HF	2002988	H8 QL80 SL FV HF API 4 1/2IN Reg Pin	■	■
	HD	TL	MX 1281093	H8 QL80 HD TL MX API 4 1/2IN Reg Pin	■	■
		HF	1281095	H8 QL80 HD TL HF API 4 1/2IN Reg Pin	■	■
DHD380	HD	FV	MX 1281387	H8 DHD380 HD FV MX API 4 1/2IN Reg Pin	■	■
		HF	1281388	H8 DHD380 HD FV HF API 4 1/2IN Reg Pin	■	■
	SL	FV	MX 1281390	H8 DHD380 SL FV MX API 4 1/2IN Reg Pin	■	■
		HF	1281389	H8 DHD380 SL FV HF API 4 1/2IN Reg Pin	■	■



Components

Ref	Description	Part number QL80	Part number DHD380
1	Top adaptor/Backhead HD (SL)	1281108 (2002982)	
2	Backhead O-ring	9003540	
3	Check valve	9003436	
4	Make up ring	1281110	
5	Check valve spring	9003435	
6	Air distributor O-ring	9003542	
7	Air distributor	1281109	
8a	Inner cylinder assembly - MX (Maximum Performance)	1281116	
8b	Inner cylinder assembly - HF (High Efficiency)	1281117	
9	Piston FV, Foot valved (TL, Tubeless)	1281103 (1281102)	1281371
10	Wear sleeve HD (SL)	1281099 (2002983)	
11	Guide bush FV (TL)	1281101 (1281100)	1281372
12	Bit retaining ring assembly (incl. 13, O-ring)	1281107	1281369
13	Bit retaining ring O-ring	1119422	
14	Chuck HD (SL)	1281106 (2002986)	1281370 (1281373)
	Service kit H8 incl. (2, 5, 6, 13)	1281287	
	Repair kit H8 HD (SL) incl. (2, 3, 4, 5, 6, 12, 14)	1281288 (1281340)	1281408 (1281412)
	Life Kit H8 HD (SL) FV API 3 1/2" Pin incl. (1, 10, 11, 14)	1281336 (1281341)	1281410 (1281411)
	Life Kit H8 HD (SL) TL API 3 1/2" Pin incl. (1, 10, 11, 14)	1281289 (1281406)	-

Air consumption



Hammer Specifications

	Imperial	Metric
Weight (HD, less bit)	441.0 lbs	200.0 kg
Weight (SL, less bit)	379.2 lbs	172.0 kg
Length (less bit)	49.02"	1245 mm
Outside Dia. (HD)	7.64"	194 mm
Outside Dia. (SL)	7.24"	184 mm
Discard Limit	6.85"	174 mm
Piston Weight (FV)	103.2 lbs	46.8 kg
Piston Weight (TL)	91.7 lbs	41.6 kg

HD = Heavy Duty
 SL = Slim Line
 FV = Foot Valved
 TL = Tubeless
 MX = Maximum Performance
 HF = High Efficiency

Please contact Robit's sales regarding the



DTH hammers: sales@robitgroup.com



DTH HAMMERS

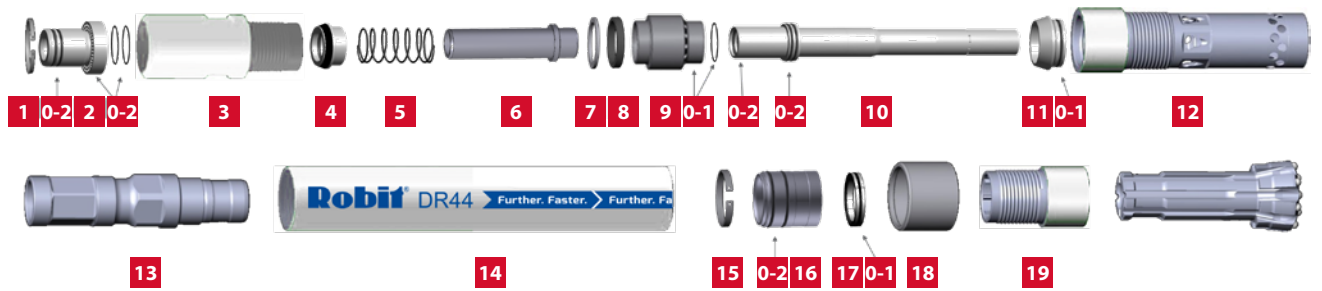
RC HAMMERS

Hammer	Shank	Top sub thread options	Wear Sleeve O.D.		Length		Weight	Piston weight
			[mm]	[in]	[mm]	[in]	[kg]	[kg]
DR44	DR44	4" REMET	121	4 ¾	1216	47,9	70	13,6
		4" METZKE	121	4 ¾	1216	47,9	70	13,6
		4 ½" REMET	121	4 ¾	1216	47,9	70	13,6
DR53	DR53	4 ½" REMET	121	4 ¾	1226	48,3	68	14
		4 ½" METZKE	121	4 ¾	1226	48,3	68	14
DR53 HEAVY DUTY	DR53	4 ½" METZKE	126	5	1226	48,3	74	14
DR53 RETENTION	DR53 RETENTION	4 ½" REMET	121	4 ¾	1269	50,0	68	14
DR55	DR55	4 ½" REMET	130	5 ⅛	1252	49,3	81	16,5
		4 ½" METZKE	130	5 ⅛	1252	49,3	81	16,5
DR55 RETENTION	DR55 RETENTION	4 ½" REMET	130	5 ⅛	1294	50,9	81	16,5
		4 ½" METZKE	130	5 ⅛	1294	50,9	81	16,5



RC HAMMERS

DR44 4" REMET



1059546 DR44 4" REMET HAMMER ASSEMBLY

1	1000895	Circlip Internal
2	1107035	Adaptor Air Screen 4" Remet
3	1107041	Top Sub 4" Remet
4	1046940	Check Valve
5	9001056	Check Valve Spring
6	1043770	Adaptor Tube
7	1046943	Steel Make Up Ring
8	1046942	Make Up Ring
9	1066177	Distributor
10	1046945	Sample Tube Venturi
11	1107120	Sample Tube Mount
12	1046946	Inner Cylinder 104.9mm A/F
13	1046947	Piston
14	1046948	Wear Sleeve
15	1061501	Piston Retaining Ring
16	1046950	Guide Bush
17	1046951	Bit Retaining Ring
18	1046958	Chuck Sleeve 5 3/16"
19	1043771	Chuck
O-1		O Ring Location - Quantity

Hammer Specifications

Bit Shank	DR44
Bit Range	5" - 127mm to 5 1/2" - 140mm
Top Sub Thread	4" Remet
Spanner Flat	3.7" - 94mm A/F x 1.96" - 50mm
Overall Length S/S	47.9" - 1216mm
Weight (less bit)	154lbs. - 70kg
Wear Sleeve O.D.	4.76" - 121mm
Oil Consumption	2 - 3 litres per hour

Air Pressure

Air Consumption

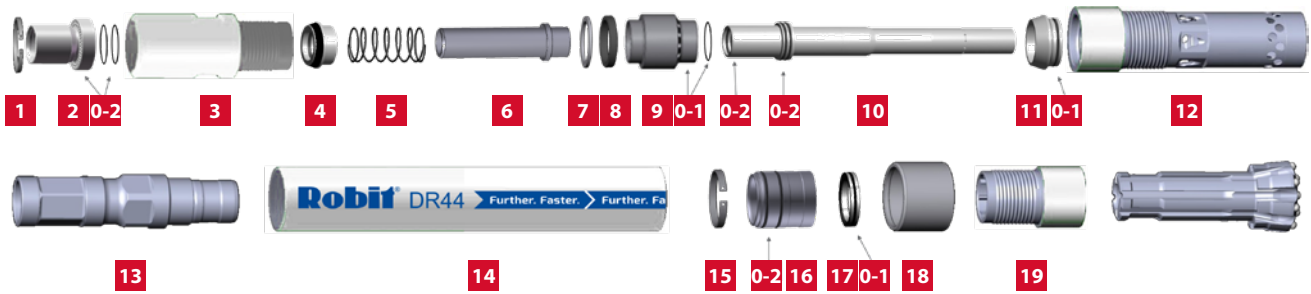
PSI	bar	CFM	m ³ /min
250	17.2	504	13.6
300	20.7	614	16.6
350	24.1	708	19.1
400	27.5	808	21.8
450	31	903	24.2
500	34.5	987	26.6

Spare Parts

1071679	O Ring Kit – Contains O Rings for items 2, 9, 10, 11, 16, 17
1059550	Make Up Kit – Contains O Ring Kit plus inner seal for 4 and item 8
1046944	Sample Tube Standard

RC HAMMERS

DR44 4" METZKE



1261532 DR44 4" METZKE HAMMER ASSEMBLY

1	1000895	Circlip Internal
2	1107037	Adaptor Air Screen 4" Metzke
3	1107040	Top Sub 4" Metzke
4	1046940	Check Valve
5	9001056	Check Valve Spring
6	1043770	Adaptor Tube
7	1046943	Steel Make Up Ring
8	1046942	Make Up Ring
9	1066177	Distributor
10	1046944	Sample Tube
11	1107120	Sample Tube Mount
12	1107122	Inner Cylinder
13	1046947	Piston
14	1046948	Wear Sleeve
15	1061501	Piston Retaining Ring
16	1046950	Guide Bush
17	1046951	Bit Retaining Ring
18	1046958	Chuck Sleeve 5 3/16"
19	1043771	Chuck
O-1		O Ring Location - Quantity

Hammer Specifications

Bit Shank	DR44
Bit Range	5" - 127mm to 5 1/2" - 140mm
Top Sub Thread	4" Metzke
Spanner Flat	3.7" - 94mm A/F x 1.96" - 50mm
Overall Length S/S	47.9" - 1216mm
Weight (less bit)	154lbs. - 70kg
Wear Sleeve O.D.	4.76" - 121mm
Oil Consumption	2 - 3 litres per hour

Air Pressure

Air Consumption

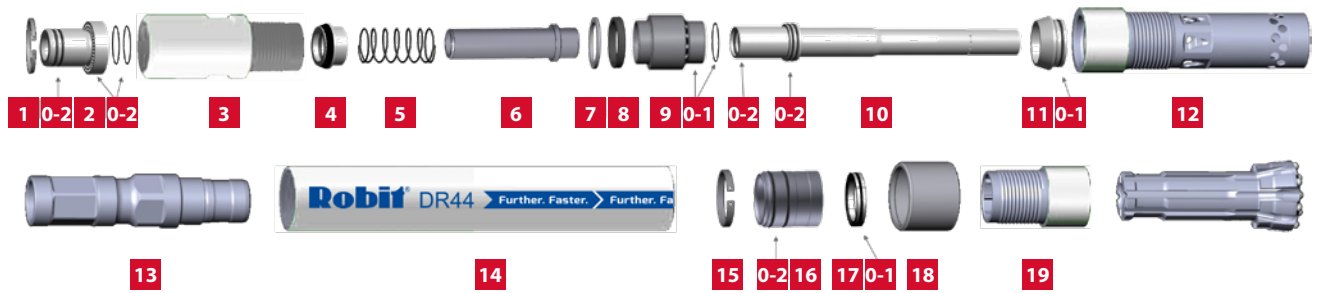
PSI	bar	CFM	m ³ /min
250	17.2	504	13.6
300	20.7	614	16.6
350	24.1	708	19.1
400	27.5	808	21.8
450	31	903	24.2
500	34.5	987	26.6

Spare Parts

1071679	O Ring Kit – Contains O Rings for items 2, 9, 10, 11, 16, 17
1059550	Make Up Kit – Contains O Ring Kit plus inner seal for 4 and item 8
1046945	Sample Tube Venturi

RC HAMMERS

DR44 4 1/2" REMET



1063065 DR44 4 1/2" REMET HAMMER ASSEMBLY

1	1000896	Circlip Internal
2	1084159	Adaptor Air Screen 4 1/2" Remet
3	1046939	Top Sub 4 1/2" Remet
4	1046940	Check Valve
5	9001056	Check Valve Spring
6	1043770	Adaptor Tube
7	1046943	Steel Make Up Ring
8	1046942	Make Up Ring
9	1066177	Distributor
10	1046945	Sample Tube Venturi
11	1107120	Sample Tube Mount
12	1046946	Inner Cylinder 104.9mm A/F
13	1046947	Piston
14	1046948	Wear Sleeve
15	1061501	Piston Retaining Ring
16	1046950	Guide Bush
17	1046951	Bit Retaining Ring
18	1046958	Chuck Sleeve 5 3/16"
19	1043771	Chuck
O-1		O Ring Location - Quantity

Hammer Specifications

Bit Shank	DR44
Bit Range	5" - 127mm to 5 1/2" - 140mm
Top Sub Thread	4 1/2" Remet
Spanner Flat	3.7" - 94mm A/F x 1.96" - 50mm
Overall Length S/S	47.9" - 1216mm
Weight (less bit)	154lbs. - 70kg
Wear Sleeve O.D.	4.76" - 121mm
Oil Consumption	2 - 3 litres per hour

Air Pressure

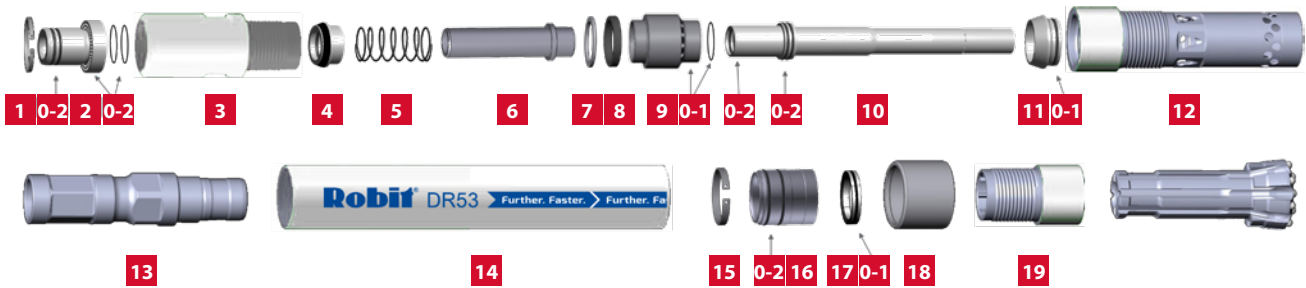
Air Consumption

PSI	bar	CFM	m ³ /min
250	17.2	504	13.6
300	20.7	614	16.6
350	24.1	708	19.1
400	27.5	808	21.8
450	31	903	24.2
500	34.5	987	26.6

Spare Parts

1071679	O Ring Kit – Contains O Rings for items 2, 9, 10, 11, 16, 17
1059550	Make Up Kit – Contains O Ring Kit plus inner seal for 4 and item 8
1046944	Sample Tube Standard

DR53 4 1/2" REMET



1108034 DR53 4 1/2" REMET HAMMER ASSEMBLY

1	1000896	Circlip Internal
2	1084159	Adaptor Air Screen 4 1/2" Remet
3	1107182	Top Sub 4 1/2" Remet
4	1046940	Check Valve
5	9001056	Check Valve Spring
6	1043770	Adaptor Tube
7	1046943	Steel Make Up Ring
8	1046942	Make Up Ring
9	1066177	Distributor
10	1107637	Sample Tube Venturi
11	1107183	Sample Tube Mount
12	1107185	Inner Cylinder 101.6mm A/F
13	1107186	Piston
14	1258073	Wear Sleeve
15	1107191	Piston Retaining Ring
16	1107192	Guide Bush
17	1118005	Bit Retaining Ring
18	1107221	Chuck Sleeve 5 7/16"
19	1107227	Chuck
O-1		O Ring Location - Quantity

Hammer Specifications

Bit Shank	DR53
Bit Range	5" - 127mm to 5 5/8" - 143mm
Top Sub Thread	4 1/2" Remet
Spanner Flat	3.7" - 95mm A/F x 1.96" - 50mm
Overall Length S/S	48" - 1226mm
Weight (less bit)	146lbs. - 66kg
Wear Sleeve O.D.	4.76" - 121mm
Oil Consumption	2 - 3 litres per hour

Air Pressure

Air Consumption

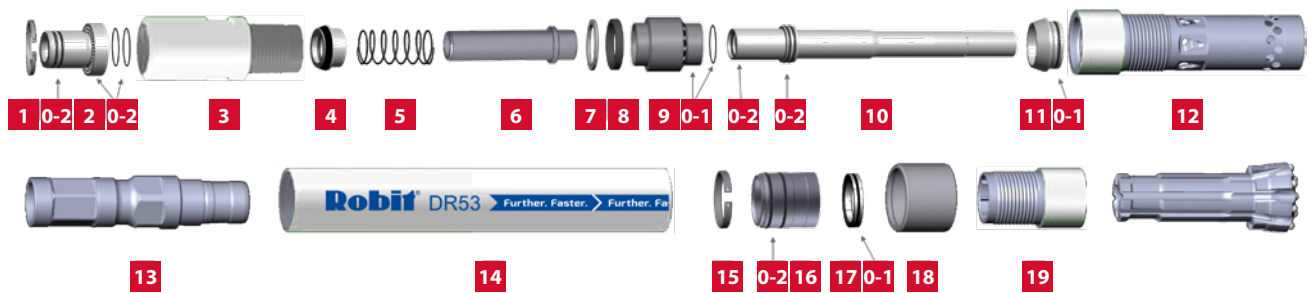
PSI	bar	CFM	m ³ /min
250	17.2	550	16.1
300	24.1	660	19.3
400	27.5	750	21.9
450	31.0	925	27.0
500	34.5	1030	30.1

Spare Parts

1103213	O Ring Kit – Contains O Rings for items 2, 9, 10, 11, 16, 17
1103211	Make Up Kit – Contains O Ring Kit plus inner seal for 4 and item 8
1118004	Sample Tube Standard

RC HAMMERS

DR53 4 1/2" REMET RETENTION



1252172 DR53 4 1/2" REMET RETENTION HAMMER ASSY

1	1000896	Circlip Internal
2	1084159	Adaptor Air Screen 4 1/2" Remet
3	1107182	Top Sub 4 1/2" Remet
4	1046940	Check Valve
5	9001056	Check Valve Spring
6	1043770	Adaptor Tube
7	1046943	Steel Make Up Ring
8	1046942	Make Up Ring
9	1066177	Distributor
10	1107637	Sample Tube Venturi
11	1107183	Sample Tube Mount
12	1107185	Inner Cylinder 101.6mm A/F
13	1107186	Piston
14	1258073	Wear Sleeve
15	1107191	Piston Retaining Ring
16	1107192	Guide Bush
17	1118005	Bit Retaining Ring
18	1216716	Chuck Sleeve 5 7/16" Retention
19	1216711	Chuck Retention
O-1		O Ring Location - Quantity

Hammer Specifications

Bit Shank	DR53
Bit Range	5 3/8" - 137mm to 5 5/8" - 143mm
Top Sub Thread	4 1/2" Remet
Spanner Flat	3.7" - 95mm A/F x 1.96" - 50mm
Overall Length S/S	50" - 1269mm
Weight (less bit)	150lbs. - 68kg
Wear Sleeve O.D.	4.76" - 121mm
Oil Consumption	2 - 3 litres per hour

Air Pressure

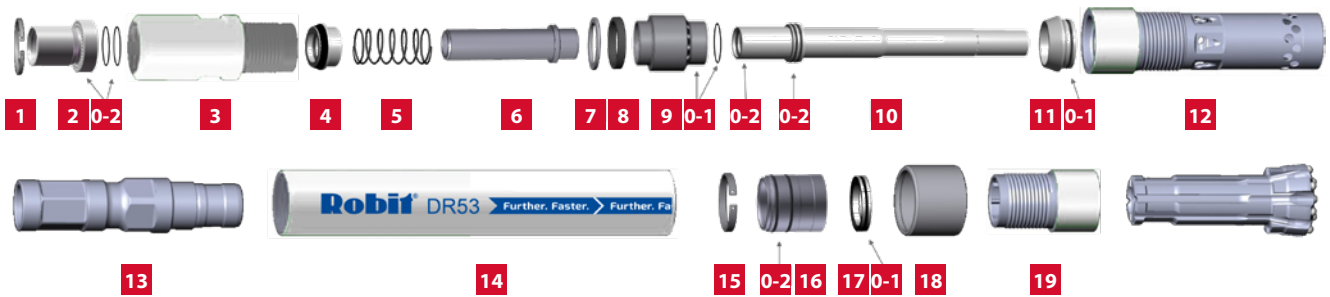
Air Consumption

PSI	bar	CFM	m ³ /min
250	17.2	550	16.1
300	24.1	660	19.3
400	27.5	750	21.9
450	31.0	925	27.0
500	34.5	1030	30.1

Spare Parts

1103213	O Ring Kit – Contains O Rings for items 2, 9, 10, 11, 16, 17
1103211	Make Up Kit – Contains O Ring Kit plus inner seal for 4 and item 8
1118004	Sample Tube Standard

DR53 4 1/2" METZKE



1108033 DR53 4 1/2" METZKE HAMMER ASSEMBLY

1	1000896	Circlip Internal
2	1107736	Adaptor Air Screen 4 1/2" Metzke
3	1107181	Top Sub 4 1/2" Metzke
4	1046940	Check Valve
5	9001056	Check Valve Spring
6	1043770	Adaptor Tube
7	1046943	Steel Make Up Ring
8	1046942	Make Up Ring
9	1066177	Distributor
10	1107637	Sample Tube Venturi
11	1107183	Sample Tube Mount
12	1107184	Inner Cylinder
13	1107186	Piston
14	1258073	Wear Sleeve
15	1107191	Piston Retaining Ring
16	1107192	Guide Bush
17	1118005	Bit Retaining Ring
18	1107221	Chuck Sleeve 5 7/16"
19	1107227	Chuck
O-1		O Ring Location - Quantity

Hammer Specifications

Bit Shank	DR53
Bit Range	5" - 127mm to 5 5/8" - 143mm
Top Sub Thread	4 1/2" Metzke
Spanner Flat	3.7" - 95mm A/F x 1.96" - 50mm
Overall Length S/S	48" - 1226mm
Weight (less bit)	146lbs. - 66kg
Wear Sleeve O.D.	4.76" - 121mm
Oil Consumption	2 - 3 litres per hour

Air Pressure

Air Consumption

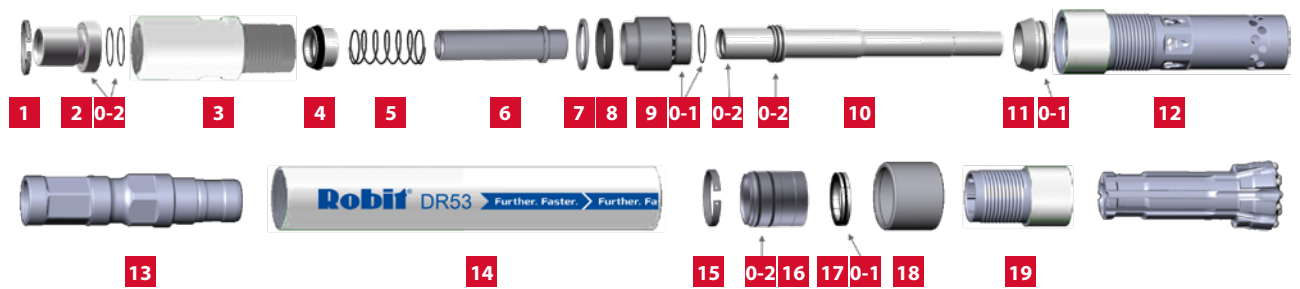
PSI	bar	CFM	m ³ /min
250	17.2	550	16.1
300	24.1	660	19.3
400	27.5	750	21.9
450	31.0	925	27.0
500	34.5	1030	30.1

Spare Parts

1103213	O Ring Kit – Contains O Rings for items 2, 9, 10, 11, 16, 17
1103211	Make Up Kit – Contains O Ring Kit plus inner seal for 4 and item 8
1118004	Sample Tube Standard

RC HAMMERS

DR53 4½" METZKE HEAVY DUTY



1220145 DR53 4½" METZKE HEAVY DUTY ASSEMBLY

1	1000896	Circlip Internal
2	1107736	Adaptor Air Screen 4 ½" Metzke
3	1107181	Top Sub 4 ½" Metzke
4	1046940	Check Valve
5	9001056	Check Valve Spring
6	1043770	Adaptor Tube
7	1046943	Steel Make Up Ring
8	1046942	Make Up Ring
9	1066177	Distributor
10	1107637	Sample Tube Venturi
11	1107183	Sample Tube Mount
12	1107184	Inner Cylinder
13	1107186	Piston
14	1216718	Wear Sleeve Heavy Duty
15	1107191	Piston Retaining Ring
16	1107192	Guide Bush
17	1118005	Bit Retaining Ring
18	1220142	Chuck Sleeve 5 7/16" Heavy Duty
19	1216305	Chuck SF
O-1		O Ring Location - Quantity

Hammer Specifications

Bit Shank	DR53
Bit Range	5 ⅜" - 137mm to 5 ⅝" - 143mm
Top Sub Thread	4 ½" Metzke
Spanner Flat	3.7" - 95mm A/F x 1.96" - 50mm
Overall Length S/S	48" - 1226mm
Weight (less bit)	163lbs. - 74kg
Wear Sleeve O.D.	4.96" - 126mm
Oil Consumption	2 - 3 litres per hour

Air Pressure

Air Consumption

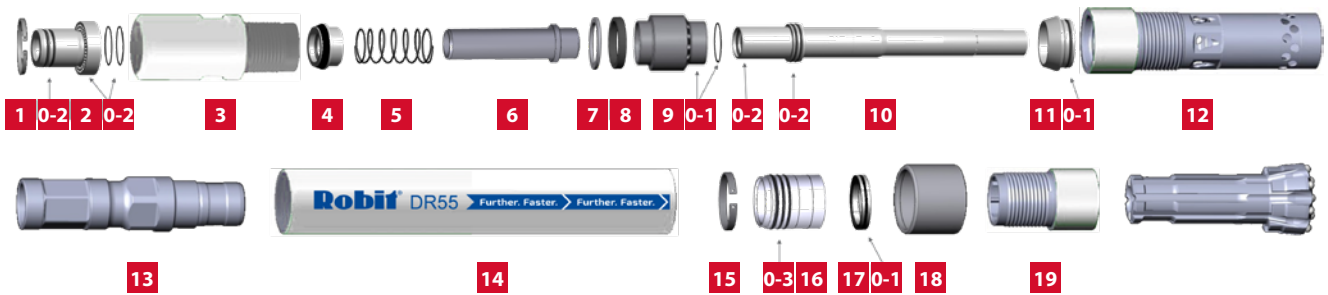
PSI	bar	CFM	m³/min
250	17.2	550	16.1
300	24.1	660	19.3
400	27.5	750	21.9
450	31.0	925	27.0
500	34.5	1030	30.1

Spare Parts

1103213	O Ring Kit – Contains O Rings for items 2, 9, 10, 11, 16, 17
1103211	Make Up Kit – Contains O Ring Kit plus inner seal for 4 and item 8
1118004	Sample Tube Standard

RC HAMMERS

DR55 4 1/2" REMET



1051842 DR55 4 1/2" REMET HAMMER ASSEMBLY

1	1000897	Circlip Internal
2	1048119	Adaptor Air Screen 4 1/2" Remet
3	1048188	Top Sub 4 1/2" Remet
4	1048189	Check Valve
5	9001055	Check Valve Spring
6	1048192	Adaptor Tube
7	1009562	Steel Make Up Ring
8	1010627	Make Up Ring
9	1048194	Distributor
10	1048195	Sample Tube Venturi
11	1048196	Sample Tube Mount
12	1048197	Inner Cylinder
13	1107238	Piston
14	1248977	Wear Sleeve
15	1044582	Piston Retaining Ring
16	1009572	Guide Bush
17	1009573	Bit Retaining Ring
18	1051774	Chuck Sleeve 5 7/16"
19	1051849	Chuck
O-1		O Ring Location - Quantity

Hammer Specifications

Bit Shank	DR55
Bit Range	5 3/8" - 137mm to 5 3/4" - 146mm
Top Sub Thread	4 1/2" Remet
Spanner Flat	4.09" - 104mm A/F x 1.96" - 50mm
Overall Length S/S	49.3" - 1252mm
Weight (less bit)	179 lbs - 81kg
Wear Sleeve O.D.	5.1" - 130mm
Oil Consumption	2 - 3 litres per hour

Air Pressure

Air Consumption

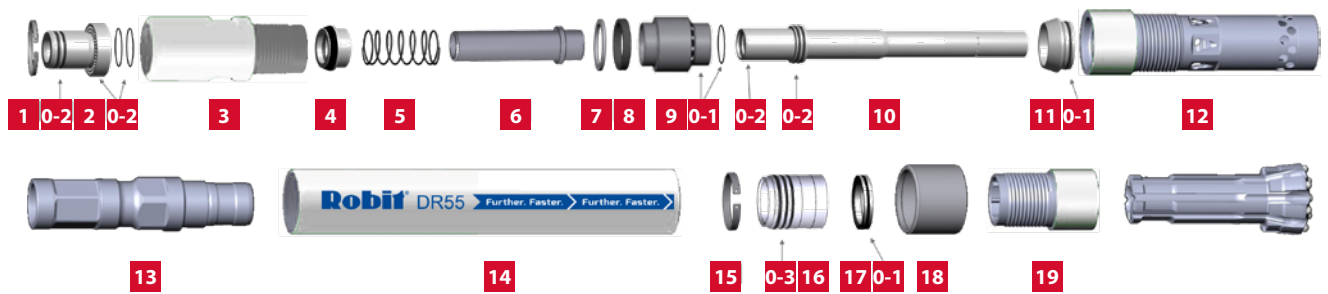
PSI	bar	CFM	m ³ /min
250	17.2	577	16.3
350	24.1	787	22.3
450	31	971	27.5
550	37.9	1156	32.7
650	44.8	1445	40.9
750	51.7	1806	51.1

Spare Parts

1048201	O Ring Kit – Contains O Rings for items 2, 9, 10, 11, 16, 17
1048200	Make Up Kit – Contains O Ring Kit plus inner seal for 4 and item 8
1113851	Sample Tube Standard

RC HAMMERS

DR55 4 1/2" REMET RETENTION



1051843 DR55 4 1/2" REMET RETENTION HAMMER ASSY

1	1000897	Circlip Internal
2	1048119	Adaptor Air Screen 4 1/2" Remet
3	1048188	Top Sub 4 1/2" Remet
4	1048189	Check Valve
5	9001055	Check Valve Spring
6	1048192	Adaptor Tube
7	1009562	Steel Make Up Ring
8	1010627	Make Up Ring
9	1048194	Distributor
10	1048195	Sample Tube Venturi
11	1048196	Sample Tube Mount
12	1048197	Inner Cylinder
13	1107238	Piston
14	1248977	Wear Sleeve
15	1044582	Piston Retaining Ring
16	1009572	Guide Bush
17	1009573	Bit Retaining Ring
18	1051761	Chuck Sleeve 5 7/16" Retention
19	1046868	Chuck Retention
O-1		O Ring Location - Quantity

Hammer Specifications

Bit Shank	DR55
Bit Range	5 3/8" - 137mm to 5 3/4" - 146mm
Top Sub Thread	4 1/2" Remet
Spanner Flat	4.09" - 104mm A/F x 1.96" - 50mm
Overall Length S/S	51" - 1294mm
Weight (less bit)	179 lbs - 81kg
Wear Sleeve O.D.	5.1" - 130mm
Oil Consumption	2 - 3 litres per hour

Air Pressure

Air Consumption

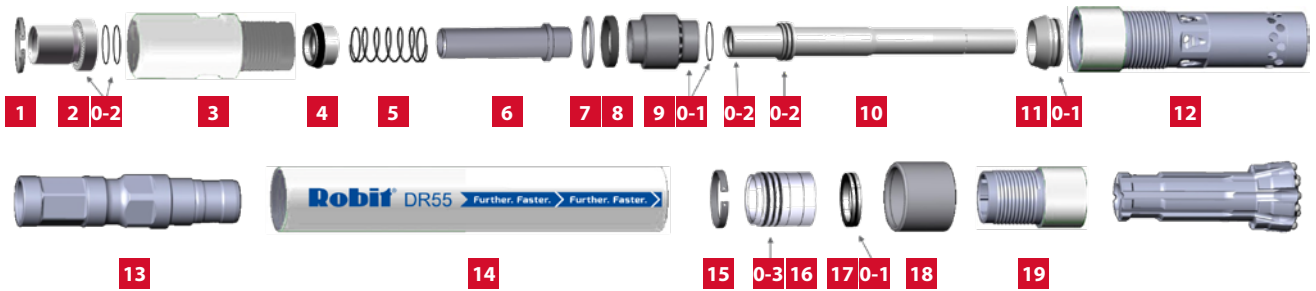
PSI	bar	CFM	m ³ /min
250	17.2	577	16.3
350	24.1	787	22.3
450	31	971	27.5
550	37.9	1156	32.7
650	44.8	1445	40.9
750	51.7	1806	51.1

Spare Parts

1048201	O Ring Kit – Contains O Rings for items 2, 9, 10, 11, 16, 17
1048200	Make Up Kit – Contains O Ring Kit plus inner seal for 4 and item 8
1113851	Sample Tube Standard

RC HAMMERS

DR55 4 1/2" METZKE



1108035 DR55 4 1/2" METZKE HAMMER ASSEMBLY

1	1107229	Circlip Internal
2	1059984	Adaptor Air Screen 4 1/2" Metzke
3	1107234	Top Sub 4 1/2" Metzke
4	1048189	Check Valve
5	9001055	Check Valve Spring
6	1048192	Adaptor Tube
7	1009562	Steel Make Up Ring
8	1010627	Make Up Ring
9	1048194	Distributor
10	1048195	Sample Tube Venturi
11	1048196	Sample Tube Mount
12	1048197	Inner Cylinder
13	1107238	Piston
14	1248977	Wear Sleeve
15	1044582	Piston Retaining Ring
16	1009572	Guide Bush
17	1009573	Bit Retaining Ring
18	1051774	Chuck Sleeve 5 7/16"
19	1051849	Chuck
O-1		O Ring Location - Quantity

Hammer Specifications

Bit Shank	DR55
Bit Range	5 3/8" - 137mm to 5 3/4" - 146mm
Top Sub Thread	4 1/2" Metzke
Spanner Flat	4.09" - 104mm A/F x 1.96" - 50mm
Overall Length S/S	49.3" - 1252mm
Weight (less bit)	179 lbs - 81kg
Wear Sleeve O.D.	5.1" - 130mm
Oil Consumption	2 - 3 litres per hour

Air Pressure

Air Consumption

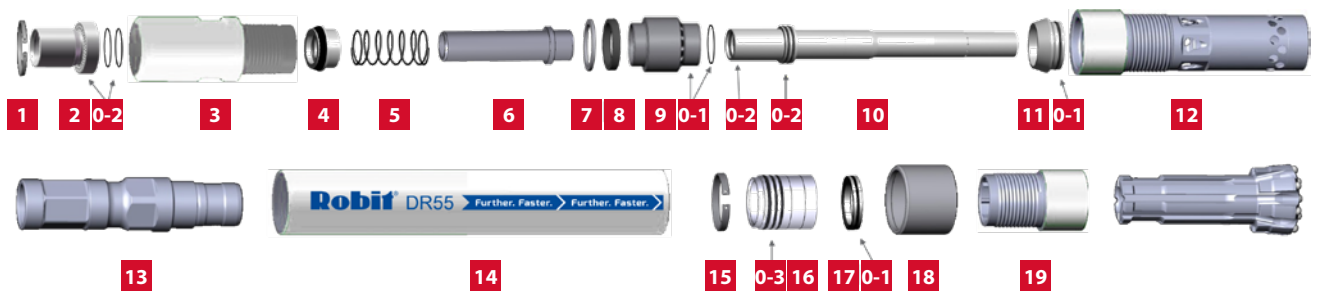
PSI	bar	CFM	m ³ /min
250	17.2	577	16.3
350	24.1	787	22.3
450	31	971	27.5
550	37.9	1156	32.7
650	44.8	1445	40.9
750	51.7	1806	51.1

Spare Parts

1048201	O Ring Kit – Contains O Rings for items 2, 9, 10, 11, 16, 17
1048200	Make Up Kit – Contains O Ring Kit plus inner seal for 4 and item 8
1113851	Sample Tube Standard

RC HAMMERS

DR55 4 1/2" METZKE RETENTION



1108037 DR55 4 1/2" METZKE RETENTION ASSEMBLY

1	1107229	Circlip Internal
2	1059984	Adaptor Air Screen 4 1/2" Metzke
3	1107234	Top Sub 4 1/2" Metzke
4	1048189	Check Valve
5	9001055	Check Valve Spring
6	1048192	Adaptor Tube
7	1009562	Steel Make Up Ring
8	1010627	Make Up Ring
9	1048194	Distributor
10	1048195	Sample Tube Venturi
11	1048196	Sample Tube Mount
12	1048197	Inner Cylinder
13	1107238	Piston
14	1248977	Wear Sleeve
15	1044582	Piston Retaining Ring
16	1009572	Guide Bush
17	1009573	Bit Retaining Ring
18	1051761	Chuck Sleeve 5 7/16" Retention
19	1046868	Chuck Retention
O-1		O Ring Location - Quantity

Hammer Specifications

Bit Shank	DR55
Bit Range	5 3/8" - 137mm to 5 3/4" - 146mm
Top Sub Thread	4 1/2" Metzke
Spanner Flat	4.09" - 104mm A/F x 1.96" - 50mm
Overall Length S/S	51" - 1294mm
Weight (less bit)	179 lbs - 81kg
Wear Sleeve O.D.	5.1" - 130mm
Oil Consumption	2 - 3 litres per hour

Air Pressure

Air Consumption

PSI	bar	CFM	m ³ /min
250	17.2	577	16.3
350	24.1	787	22.3
450	31	971	27.5
550	37.9	1156	32.7
650	44.8	1445	40.9
750	51.7	1806	51.1

Spare Parts

1048201	O Ring Kit – Contains O Rings for items 2, 9, 10, 11, 16, 17
1048200	Make Up Kit – Contains O Ring Kit plus inner seal for 4 and item 8
1113851	Sample Tube Standard



DTH BITS

CONVENTIONAL BITS

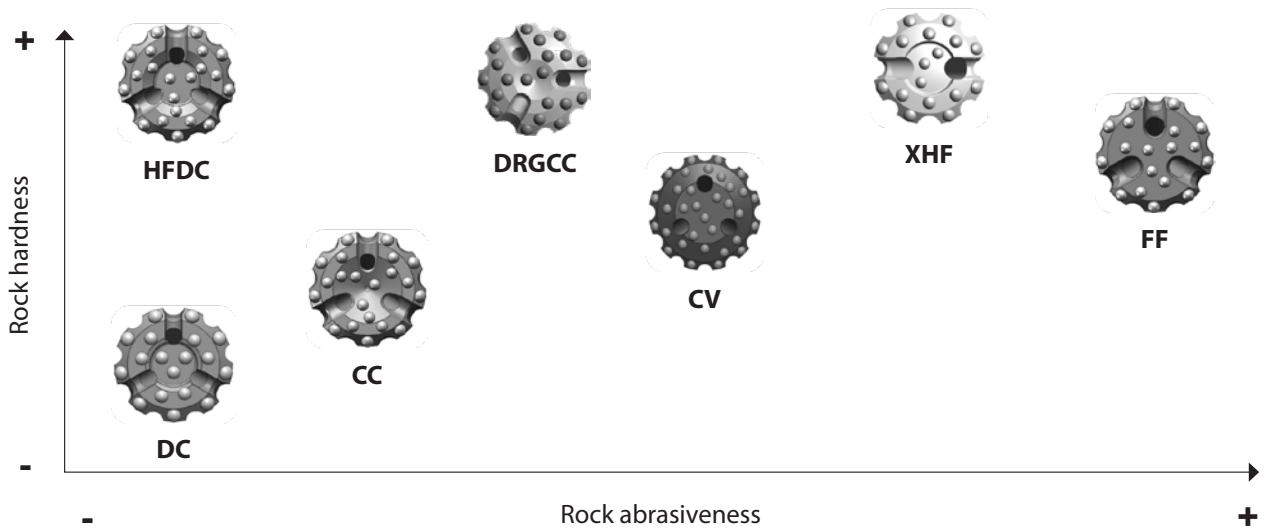
RC BITS



DTH Bit Codes

BIT SELECTION GUIDE

Mining & quarrying (bench drilling & production)



Conventional Bits



Flat Face - FF

- Common face design in global market
- Excellent performing bit
- Hard to very hard rock
- Solid consistent formation



Concave - CC

- Common face design in global market
- Excellent deviation control
- Medium hard to hard rock
- Broken and sloped angled formation



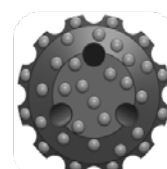
Drop Centre - DC

- Good all rounder
- Excellent deviation control
- Medium rock
- Solid / fractured inconsistent formation



Hard Formation Drop Centre - HFDC

- Good all rounder
- Excellent deviation control
- Hard rock
- Solid / fractured inconsistent formation



Convex - CV

- Common in global market
- Excellent penetration rate
- Medium / hard formation
- Shales / sandstone formations

Reverse Circulation Bits



Extra Hard Formation - XHF

- Excellent penetration rate
- Solid consistent formation
- Good all round bit - excellent in hard to very hard rock



Drop Centre - DC

- Cross slot for improved air flow
- Solid / fractured inconsistent formation
- Good all round bit - excellent in soft to medium hard rock

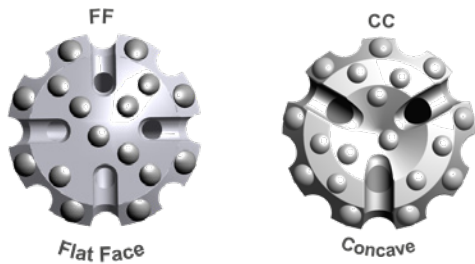
DTH BITS

CONVENTIONAL BITS



CONVENTIONAL BITS

BR2, IR/DHD3.5 & TD40



Button shapes available: H1 (Hemispherical) and SB1 (Semi Ballistic)

BR2

Product name	Diameter		Face design	Gauge	Button shape	Buttons		Flushing	*Item number	Weight
	[mm]	[in]				[No.]	[mm]			
DTH BIT 70 BR2 FF H1	70	2 ¾"	FF	45	H1	4 x 10	6 x 10	2	-	2.3
DTH BIT 76 BR2 FF H1	76	3"	FF	45	H1	4 x 10	6 x 10	2	-	2.4
DTH BIT 80 BR2 FF H1	80	3 ⅛"	FF	45	H1	4 x 10	6 x 10	2	-	2.5

*Multiple variants available, ask product codes from Robit sales

IR/DHD3.5

Product name	Diameter		Face design	Gauge	Button shape	Buttons		Flushing	*Item number	Weight
	[mm]	[in]				[No.]	[mm]			
DTH BIT 102 IR3.5 CC SB1	102	4"	CC	35°	SB1	6/3 x 11/11	9 x 12	3	1280200	5.0

*Multiple variants available, ask product codes from Robit sales

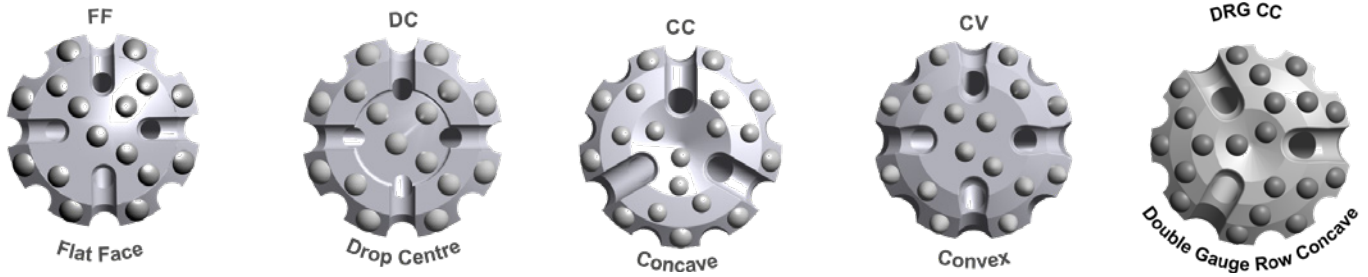
TD40

Product name	Diameter		Face design	Gauge	Button shape	Buttons		Flushing	*Item number	Weight
	[mm]	[in]				[No.]	[mm]			
DTH BIT 115 TD40 FF SB1	115	4 ½"	FF	35°	SB1	6 x 13	8 x 16	2	-	9.2
DTH BIT 115 TD40 FF H1	115	4 ½"	FF	35°	H1	6 x 13	8 x 16	2	-	9.2
DTH BIT 127 TD40 FF H1	127	5"	FF	35°	H1	7 x 13	8 x 16	2	-	9.9

*Multiple variants available, ask product codes from Robit sales

CONVENTIONAL BITS

DHD340, QL50 & DHD350



Button shapes available: H1 (Hemispherical) and SB1 (Semi Ballistic)

DHD340

Product name	Diameter		Face design	Gauge	Button shape	Buttons		Flushing		*Item number	Weight
	[mm]	[in]				[No.]	[mm]	[No.]	[mm]		
DTH BIT 115 DHD340 FF H1	115	4 ½"	FF	35°	H1	6 x 13	8 x 16	2	1280601	8.1	
DTH BIT 127 DHD340 FF H1	127	5"	FF	35°	H1	9 x 14	9 x 14	3	1280520	8.7	
DTH BIT 127 DHD340 CV SB1	127	5"	CV	40°	SB1	6/5 x 13	9 x 13	3	2000534	9.7	

*Multiple variants available, ask product codes from Robit sales

QL50

Product name	Diameter		Face design	Gauge	Button shape	Buttons		Flushing		*Item number	Weight
	[mm]	[in]				[No.]	[mm]	[No.]	[mm]		
DTH BIT 140 QL50 FF H1	140	5 ½"	FF	35°	H1	9 x 16	9 x 16	3	1280549	15.5	
DTH BIT 140 QL50 CC H1	140	140	CC	35°	H1	8 x 14	8 x 16	2	1280787	16.0	
DTH BIT 140 QL50 CV H1/SB1	140	140	CV	35°	H1/SB1	10 x 16	9 x 16	3	653593	16.5	
DTH BIT 146 QL50 CC H1	146	5 ¾"	CC	35°	H1	4/4 x 16	8 x 16	2	2003153	16.8	
DTH BIT 152 QL50 CC H1	152	6"	CC	35°	H1	8 x 16	8 x 16	2	670700	17.5	
DTH BIT 152 QL50 FF H1	152	6"	FF	35°	H1	9 x 18	9 x 16	3	1280555	18.6	

*Multiple variants available, ask product codes from Robit sales

DHD350

Product name	Diameter		Face design	Gauge	Button shape	Buttons		Flushing		*Item number	Weight
	[mm]	[in]				[No.]	[mm]	[No.]	[mm]		
DTH BIT 140 DHD350 FF H1	140	5 ½"	FF	35°	H1	8 x 14	9 x 16	3	1280773	16.4	

*Multiple variants available, ask product codes from Robit sales

CONVENTIONAL BITS

QL60, DHD360, QL80 & DHD380

QL60

Product name	Diameter		Face design	Gauge	Button shape	Buttons				Flushing	*Item number	Weight
	[mm]	[in]				[No.]	[mm]	[No.]	[mm]			
DTH BIT 165 QL60 FF H1 HD	165	6 1/2"	FF	35°	H1	9 x 16	9 x 18	3	1100665	22.0		
DTH BIT 165 QL60 CC H1	165	6 1/2"	CC	35°	H1	6/6 x 16	9 x 18	3	1100671	23.0		
DTH BIT 165 QL60 FF H1	165	6 1/2"	FF	35°	H1	9 x 16	9 x 16	3	1280713	21.8		
DTH Bit 165 QL60 DGR CC H1	165	6 1/2"	DGR CC	35°	H1	3/3 x 16/16	15/6 x 14/16	3	1100669	23.2		
DTH BIT 171 QL60 FF H1	171	6 3/4"	FF	35°	H1	11 x 18	9 x 18	3	1280518	23.7		
DTH BIT 203 QL60 CC H1	203	8"	CC	35°	H1	18 x 16	9 x 18	3	653142	32.0		
DTH BIT 203 QL60 FF H1	203	8"	FF	35°	H1	13 x 18	12 x 18	3	653831	29.1		

*Multiple variants available, ask product codes from Robit sales

DHD360

Product name	Diameter		Face design	Gauge	Button shape	Buttons				Flushing	*Item number	Weight
	[mm]	[in]				[No.]	[mm]	[No.]	[mm]			
DTH BIT 165 DHD360 FF H1 HD	165	6 1/2"	FF	35°	H1	9 x 16	9 x 18	3	-	23.0		

*Multiple variants available, ask product codes from Robit sales

QL80

Product name	Diameter		Face design	Gauge	Button shape	Buttons				Flushing	*Item number	Weight
	[mm]	[in]				[No.]	[mm]	[No.]	[mm]			
DTH BIT 203 QL80 CC H1	203	8"	CC	35°	H1	12/6 x 16	9 x 18	3	1280864	48.8		
DTH BIT 229 QL80 CV H1SB1	229	9"	CV	40°	H1/SB1	9/12 x 18	12 x 18	3	2003151	54.0		
DTH BIT 229 QL80 CC H1	229	9"	CC	35°	H1	9/8 x 18	12 x 18	3	1280763	51.6		

*Multiple variants available, ask product codes from Robit sales

DHD380

Product name	Diameter		Face design	Gauge	Button shape	Buttons				Flushing	*Item number	Weight
	[mm]	[in]				[No.]	[mm]	[No.]	[mm]			
DTH BIT 254 DHD380 CC H1	254	10"	CC	35°	H1	18 x 18	12 x 18	3	650389	53.2		

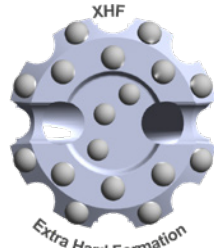
*Multiple variants available, ask product codes from Robit sales

DTH BITS
RC BITS



RC BITS

DR44, DR53, DR55 & DR55 RETENTION



Button shapes available: H1 (Hemispherical) and SB1 (Semi Ballistic)

DR44

Product name	Diameter		Face design	Gauge	Button shape	Buttons				Flushing	*Item number	Weight
	[mm]	[in]				⊘	[No.]	[mm]	[No.]			
DTH BIT 133 DR44 XHF H1	133	5 ¼"	XHF	35°	H1	6/4 x 16/14	8 x 16	2	1280594	15.3		

*Multiple variants available, ask product codes from Robit sales

DR53

Product name	Diameter		Face design	Gauge	Button shape	Buttons				Flushing	*Item number	Weight
	[mm]	[in]				⊘	[No.]	[mm]	[No.]			
DTH BIT 136 DR53 DC H1	136	5 ⅜"	DC	35°	H1	4/3 x 16/14	8 x 16	2	1280591	16.4		
DTH BIT 140 DR53 DC H1	140	5 ½"	DC	35°	H1	6/3 x 16/14	8 x 16	2	1280478	16.4		
DTH BIT 140 DR53 XHF H1	140	5 ½"	XHF	35°	H1	6/3 x 16/14	8 x 16	2	1280543	16.5		
DTH BIT 143 DR53 XHF H1	143	5 ⅝"	XHF	35°	H1	6/3 x 16/14	8 x 16	2	1280562	17.0		

*Multiple variants available, ask product codes from Robit sales

DR55 & DR55 RETENTION

Product name	Diameter		Face design	Gauge	Button shape	Buttons				Flushing	*Item number	Weight
	[mm]	[in]				⊘	[No.]	[mm]	[No.]			
DTH RC BIT 140 DR55 XHF H1	140	5 ½"	XHF	35°	H1	6/3 x 16/14	8 x 16	2	1280578	17.8		
DTH RC BIT 143 DR55 XHF H1	143	5 ⅝"	XHF	35°	H1	6/3 x 16/14	8 x 16	2	1280548	18.1		
DTH RC BIT 143 DR55 XHF RET H1	143	5 ⅝"	XHF	35°	H1	6/3 x 16/14	8 x 16	2	1280603	18.6		
DTH RC BIT 146 DR55 XHF RET H1	146	5 ¾"	XHF	35°	H1	6/3 x 16/14	8 x 16	2	1280605	18.9		
DTH RC BIT 146 DR55 XHF RET H1	146	5 ¾"	XHF	30°	H1	6/4 x 16/13	8 x 16	2	1281059	19.5		

*Multiple variants available, ask product codes from Robit sales

Robit

The Experts in Drilling Tools

ROBIT PLC

Vikkiniityntie 9

FI-33880 LEMPÄÄLÄ (TAMPERE)

FINLAND

Tel: +358 3 3140 3400

E-mail: sales@robitgroup.com

<http://www.robitgroup.com>

Your distributor:



Robit reserves all rights to any changes in the products and the specifications without prior notice.

Printed: June 2025

Copyright © 2025 by Robit Plc

Follow us on:

